

## Product datasheet for **AP06262PU-N**

### **p18 INK4c (CDKN2C) Rabbit Polyclonal Antibody**

#### **Product data:**

Product Type:	Primary Antibodies
Applications:	IHC, WB
Recommended Dilution:	<b>Western blot:</b> 1/500-1/1000. <b>Immunohistochemistry on paraffin sections</b> 1/50-1/200.
Reactivity:	Human, Mouse
Host:	Rabbit
Clonality:	Polyclonal
Immunogen:	Synthetic peptide, corresponding to amino acids 100-150 of Human p18 INK4c.
Specificity:	This antibody detects endogenous levels of p18 INK protein. (region surrounding Asp142)
Formulation:	Phosphate buffered saline (PBS), pH 7.2. State: Aff - Purified State: Liquid purified Ig fraction Preservative: 15 mM sodium azide
Concentration:	1.0 mg/ml
Purification:	The antibody was affinity-purified from rabbit antiserum by affinity-chromatography using epitope-specific immunogen and the purity is > 95% (by SDS-PAGE)
Conjugation:	Unconjugated
Storage:	Store undiluted at 2-8°C for one month or (in aliquots) at -20°C for longer. Avoid repeated freezing and thawing.
Stability:	Shelf life: one year from despatch.
Predicted Protein Size:	~ 18 kDa
Gene Name:	cyclin-dependent kinase inhibitor 2C
Database Link:	<a href="#">Entrez Gene 12580 Mouse</a> <a href="#">Entrez Gene 1031 Human</a> <a href="#">P42773</a>



[View online »](#)

**Background:**

The normal progression of cells through the cell cycle is under the control of the cyclin dependent protein kinases Cdk4 and Cdk6 which are subject to inhibition by the mitotic inhibitory protein p16. Isolated members of the p16 family have been designated p15 and p18, respectively. The p16 related protein, p18, interacts strongly with Cdk6 and to a lesser extent with Cdk4, but lacks apparent interaction with other Cdks. Recombinant p18 has been shown to inhibit cyclin D-Cdk6 kinase activity. In contrast to p21/p27 that form ternary complexes with cyclin-Cdks, only binary complexes of p15, p16 and p18 have been identified in association with Cdk4 and/or Cdk6.

**Synonyms:**

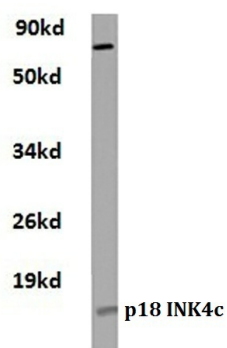
p18-INK4c, p18-INK6, p18INK6, CDKN6

**Protein Families:**

Druggable Genome

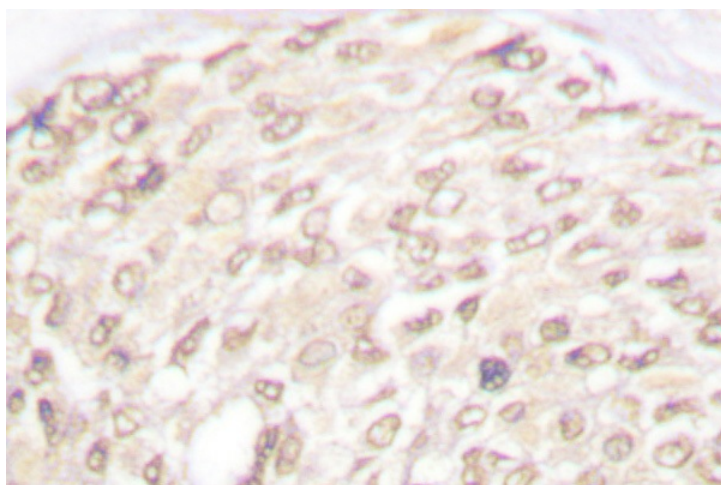
**Protein Pathways:**

Cell cycle

**Product images:**

Hela whole cell lysate  
p18 (D142) pAb at 1:500 dilution

Western blot (WB) analysis of p18 INK4c antibody in extracts from hela cells.



Immunohistochemistry (IHC) analysis of p18 INK antibody in paraffin-embedded human breast carcinoma tissue