

Product datasheet for **AP06261PU-N**

p15 INK4b (CDKN2B) Rabbit Polyclonal Antibody

Product data:

Product Type:	Primary Antibodies
Applications:	IF, IHC, WB
Recommended Dilution:	Western blot: 1/500 - 1/1000. Immunohistochemistry on paraffin sections: 1/50 - 1/200. Immunofluorescence: 1/50 - 1/200.
Reactivity:	Human, Mouse, Rat
Host:	Rabbit
Clonality:	Polyclonal
Immunogen:	Synthetic peptide, corresponding to amino acids 100-150 of Human p15 INK4b.
Specificity:	This antibody detects endogenous levels of p15 INK protein. (region surrounding Gly113)
Formulation:	Phosphate buffered saline (PBS), pH~7.2 State: Aff - Purified State: Liquid purified Ig fraction (> 95% pure SDS-PAGE). Preservative: 0.05% Sodium Azide
Concentration:	1.0 mg/ml
Purification:	Affinity Chromatography using epitope-specific immunogen
Conjugation:	Unconjugated
Storage:	Store undiluted at 2-8°C for one month or (in aliquots) at -20°C for longer. Avoid repeated freezing and thawing.
Stability:	Shelf life: One year from despatch.
Predicted Protein Size:	~ 15 kDa
Gene Name:	cyclin-dependent kinase inhibitor 2B
Database Link:	Entrez Gene 12579 Mouse Entrez Gene 25164 Rat Entrez Gene 1030 Human P42772



[View online »](#)

Background:

The normal progression of cells through the cell cycle is under the control of the cyclin dependent protein kinases Cdk4 and Cdk6 which are subject to inhibition by the mitotic inhibitory protein, p16. An isolated member of the p16 family has been designated p15. p15 expression is upregulated approximately 30-fold in TGF β -treated human keratinocytes, suggesting that p15 may act as an effector of TGF β -mediated cell cycle arrest. The gene encoding p15 has been mapped to chromosome 9p21 at a position adjacent to the p16 gene at a site of frequent chromosomal abnormality in human tumors. It has been suggested that p15 may function as an effector of TGF β -mediated cell cycle arrest through inhibition of Cdk4 and Cdk6 kinases.

Synonyms:

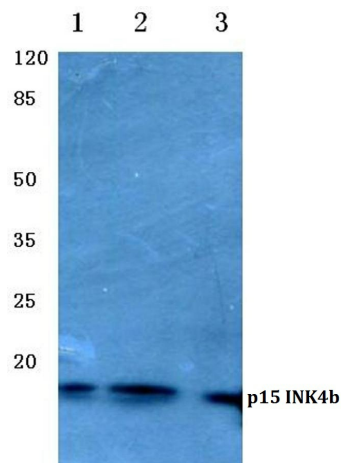
p14INK4b, MTS2, p14-INK4b, p15-INK4b

Protein Families:

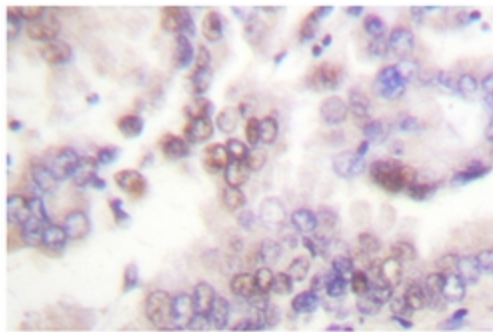
Druggable Genome

Protein Pathways:

Cell cycle, Pathways in cancer, Small cell lung cancer, TGF-beta signaling pathway

Product images:

Western blot (WB) analysis of p15 INK4b antibody at 1/500 dilution. Lane 1: HepG2 whole cell lysate, Lane 2: Mouse brain tissue lysate, Lane 3: Rat kidney tissue lysate.



Immunohistochemistry (IHC) analysis of p15 INK4b antibody in paraffin-embedded human lung carcinoma tissue.