

Product datasheet for **AP06251PU-S**

NF-kB p65 (RELA) Rabbit Polyclonal Antibody

Product data:

Product Type:	Primary Antibodies
Applications:	ELISA, IHC, WB
Recommended Dilution:	Western blot: 1/500-1/1000. Immunohistochemistry on paraffin sections 1/50-1/200.
Reactivity:	Human, Mouse
Host:	Rabbit
Clonality:	Polyclonal
Immunogen:	Synthetic peptide, corresponding to amino acids 500-550 of Human NFkB-p65.
Specificity:	This antibody detects endogenous levels of NFkappaB-p65 protein. (region surrounding Gly530)
Formulation:	Phosphate buffered saline (PBS), pH 7.2 State: Aff - Purified State: Liquid purified Ig fraction (> 95% pure by SDS-PAGE). Preservative: 0.05% Sodium Azide
Concentration:	1.0 mg/ml
Purification:	Affinity Chromatography using epitope-specific immunogen.
Conjugation:	Unconjugated
Storage:	Store undiluted at 2-8°C for one month or (in aliquots) at -20°C for longer. Avoid repeated freezing and thawing.
Stability:	Shelf life: one year from despatch.
Predicted Protein Size:	~ 60, 75 kDa
Gene Name:	RELA proto-oncogene, NF-kB subunit
Database Link:	Entrez Gene 5970 Human Q04206



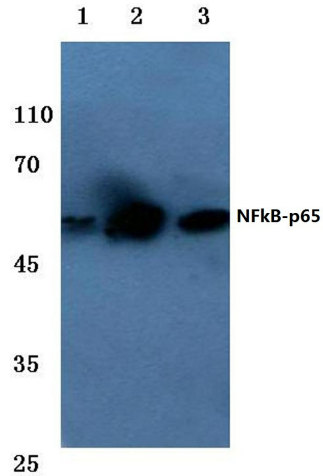
[View online »](#)

Background:

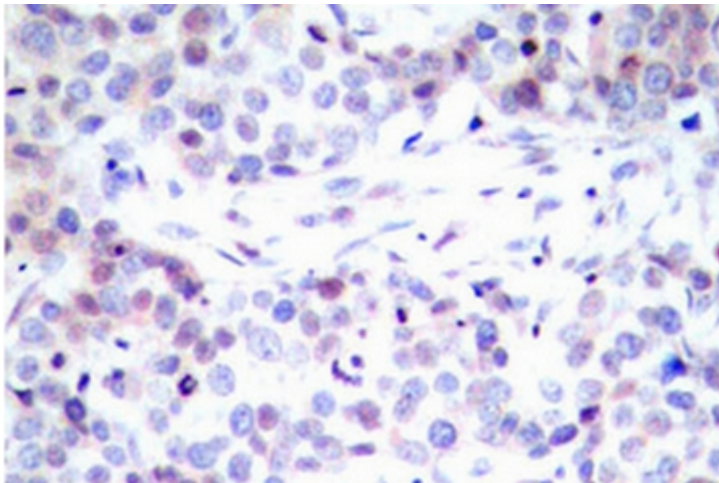
p65 is a subunit of the nuclear factor kappa B. The transcription factor NFkB is widely recognized as a critical mediator of immune and inflammatory responses. In most cell types, NFkB is found in the cytoplasm where it is associated with an inhibitory protein in many tissues. A high proportion of spontaneous NIH/3T3 transformants overexpress c-Met and by transfection analysis the c-Met proto-oncogene has been shown to exhibit transforming activity.

Synonyms:

NF kappa B p65, NFkB p65, Transcription factor p65, Rel A, NFKB3

Product images:


Western blot (WB) analysis of NFKB-p65 antibody at 1/500 dilution Lane 1:Hela whole cell lysate Lane 2:Mouse kidney tissue lysate Lane 3:Rat kidney tissue lysate



Immunohistochemistry (IHC) analyzes of NFKB-p65 antibody in paraffin-embedded human breast carcinoma tissue.