

Product datasheet for **AP06249PU-N**

NF-kB p65 (RELA) Rabbit Polyclonal Antibody

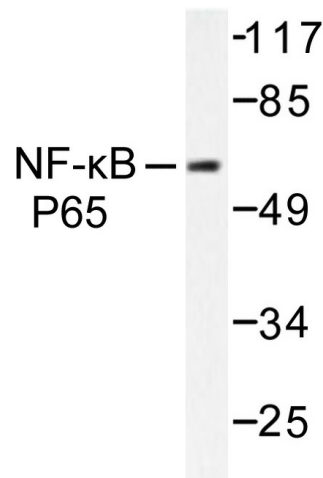
Product data:

| | |
|-------------------------|---|
| Product Type: | Primary Antibodies |
| Applications: | IHC, WB |
| Recommended Dilution: | Western blot: 1/500-1/1000. Immunohistochemistry on paraffin sections: 1/50-1/200. |
| Reactivity: | Human, Mouse, Rat |
| Host: | Rabbit |
| Clonality: | Polyclonal |
| Immunogen: | Synthetic peptide, corresponding to amino acids 450-500 of Human NFkB-p65. |
| Specificity: | This antibody detects endogenous levels of NFkappaB-p65 protein. (region surrounding Val462) |
| Formulation: | Phosphate buffered saline (PBS), pH 7.2. State: Aff - Purified State: Liquid purified Ig fraction Preservative: 0.05% sodium azide |
| Concentration: | 1.0 mg/ml |
| Purification: | Affinity-chromatography using epitope-specific immunogen and the purity is > 95% (by SDS-PAGE) |
| Conjugation: | Unconjugated |
| Storage: | Store undiluted at 2-8°C for one month or (in aliquots) at -20°C for longer. Avoid repeated freezing and thawing. |
| Stability: | Shelf life: one year from despatch. |
| Predicted Protein Size: | ~ 60, 75 kDa |
| Gene Name: | RELA proto-oncogene, NF-kB subunit |
| Database Link: | Entrez Gene 19697 Mouse Entrez Gene 309165 Rat Entrez Gene 5970 Human Q04206 |

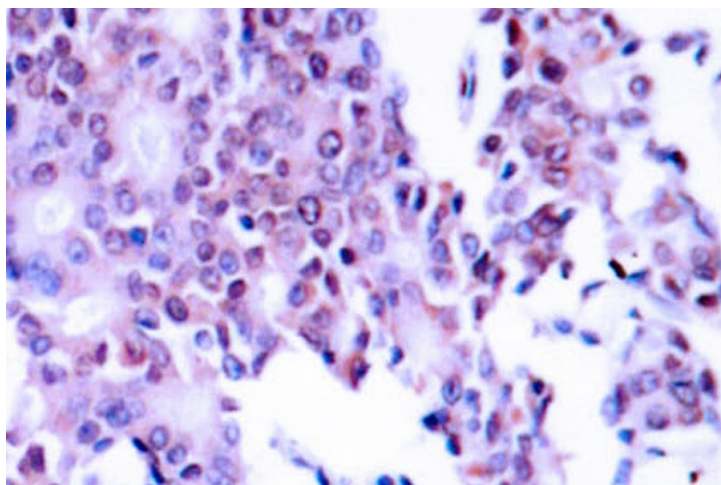


[View online »](#)

| | |
|--------------------------|--|
| Background: | p65 is a subunit of the nuclear factor kappa B. The transcription factor NF κ B is widely recognized as a critical mediator of immune and inflammatory responses. In most cell types, NF κ B is found in the cytoplasm where it is associated with an inhibitory protein in many tissues. A high proportion of spontaneous NIH/3T3 transformants overexpress c-Met and by transfection analysis the c-Met proto-oncogene has been shown to exhibit transforming activity. |
| Synonyms: | NF kappa B p65, NF κ B p65, Transcription factor p65, Rel A, NFKB3 |
| Protein Families: | Druggable Genome, Transcription Factors |
| Protein Pathways: | Acute myeloid leukemia, Adipocytokine signaling pathway, Apoptosis, B cell receptor signaling pathway, Chemokine signaling pathway, Chronic myeloid leukemia, Cytosolic DNA-sensing pathway, Epithelial cell signaling in Helicobacter pylori infection, MAPK signaling pathway, Neurotrophin signaling pathway, NOD-like receptor signaling pathway, Pancreatic cancer, Pathways in cancer, Prostate cancer, RIG-I-like receptor signaling pathway, Small cell lung cancer, T cell receptor signaling pathway, Toll-like receptor signaling pathway |

Product images:

Western blot (WB) analysis of NF κ B-p65 antibody in extracts from MOLT cells.



Immunohistochemistry (IHC) analyzes of NF-kB p65 antibody in paraffin-embedded human breast carcinoma tissue.