

## Product datasheet for **AP06248PU-M**

### **NF-kB p65 (RELA) Rabbit Polyclonal Antibody**

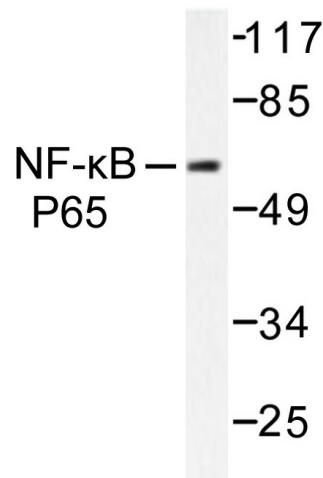
#### **Product data:**

Product Type:	Primary Antibodies
Applications:	IHC, WB
Recommended Dilution:	<b>Western blot:</b> 1/500-1/1000. <b>Immunohistochemistry on paraffin sections:</b> 1/50-1/200.
Reactivity:	Human, Mouse, Rat
Host:	Rabbit
Clonality:	Polyclonal
Immunogen:	Synthetic peptide, corresponding to amino acids 400-450 of Human NFkB-p65.
Specificity:	This antibody detects endogenous levels of NFkappaB-p65 protein. (region surrounding Thr429)
Formulation:	Phosphate buffered saline (PBS), pH 7.2. State: Aff - Purified State: Liquid purified Ig fraction Preservative: 0.05% sodium azide
Concentration:	1.0 mg/ml
Purification:	Affinity-chromatography using epitope-specific immunogen and the purity is > 95% (by SDS-PAGE)
Conjugation:	Unconjugated
Storage:	Store undiluted at 2-8°C for one month or (in aliquots) at -20°C for longer. Avoid repeated freezing and thawing.
Stability:	Shelf life: one year from despatch.
Predicted Protein Size:	~ 60, 75 kDa
Gene Name:	RELA proto-oncogene, NF-kB subunit
Database Link:	<a href="#">Entrez Gene 19697 Mouse</a> <a href="#">Entrez Gene 309165 Rat</a> <a href="#">Entrez Gene 5970 Human</a> <a href="#">Q04206</a>

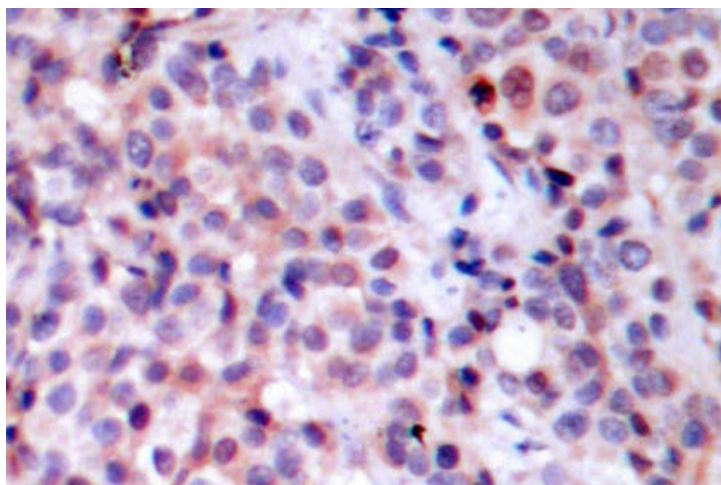


[View online »](#)

<b>Background:</b>	p65 is a subunit of the nuclear factor kappa B. The transcription factor NF $\kappa$ B is widely recognized as a critical mediator of immune and inflammatory responses. In most cell types, NF $\kappa$ B is found in the cytoplasm where it is associated with an inhibitory protein in many tissues. A high proportion of spontaneous NIH/3T3 transformants overexpress c-Met and by transfection analysis the c-Met proto-oncogene has been shown to exhibit transforming activity.
<b>Synonyms:</b>	NF kappa B p65, NF $\kappa$ B p65, Transcription factor p65, Rel A, NF $\kappa$ B3
<b>Protein Families:</b>	Druggable Genome, Transcription Factors
<b>Protein Pathways:</b>	Acute myeloid leukemia, Adipocytokine signaling pathway, Apoptosis, B cell receptor signaling pathway, Chemokine signaling pathway, Chronic myeloid leukemia, Cytosolic DNA-sensing pathway, Epithelial cell signaling in Helicobacter pylori infection, MAPK signaling pathway, Neurotrophin signaling pathway, NOD-like receptor signaling pathway, Pancreatic cancer, Pathways in cancer, Prostate cancer, RIG-I-like receptor signaling pathway, Small cell lung cancer, T cell receptor signaling pathway, Toll-like receptor signaling pathway

**Product images:**


Western blot (WB) analysis of NF- $\kappa$ B-p65 antibody in extracts from COS7 treated with TNF- $\alpha$ .



Immunohistochemistry (IHC) analyzes of NF- $\kappa$ B-p65 antibody in paraffin-embedded human breast carcinoma tissue.