

## Product datasheet for **AP06246PU-M**

### NFKB1 Rabbit Polyclonal Antibody

#### Product data:

|                         |  |
|-------------------------|--|
| Product Type:           | Primary Antibodies   |
| Applications:           | IHC, IP, WB  |
| Recommended Dilution:   | <b>Western blot:</b> 1/500-1/1000.<br><b>Immunohistochemistry on paraffin sections:</b> 1/50-1/200.<br><b>Immunoprecipitation:</b> 1/50-1/200.                       |
| Reactivity:             | Human  |
| Host:                   | Rabbit   |
| Clonality:              | Polyclonal   |
| Immunogen:              | Synthetic peptide, corresponding to amino acids 920-970 of Human NFkB-p105.  |
| Specificity:            | This antibody detects endogenous levels of NFkB-p105 protein.<br>(region surrounding Ala901)<br>This antibody does not recognize NFkB-p50 subunit.                   |
| Formulation:            | Phosphate buffered saline (PBS), pH 7.2.<br>State: Aff - Purified<br>State: Liquid purified Ig fraction (> 95% pure by SDS-PAGE)<br>Preservative: 0.05% sodium azide |
| Concentration:          | 1.0 mg/ml  |
| Purification:           | Affinity-chromatography using epitope-specific immunogen and the purity is > 95% (by SDS-PAGE)   |
| Conjugation:            | Unconjugated   |
| Storage:                | Store undiluted at 2-8°C for one month or (in aliquots) at -20°C for longer.<br>Avoid repeated freezing and thawing.   |
| Stability:              | Shelf life: one year from despatch.  |
| Predicted Protein Size: | ~ 105 kDa  |
| Gene Name:              | nuclear factor kappa B subunit 1   |
| Database Link:          | <a href="#">Entrez Gene 4790 Human P19838</a>  |



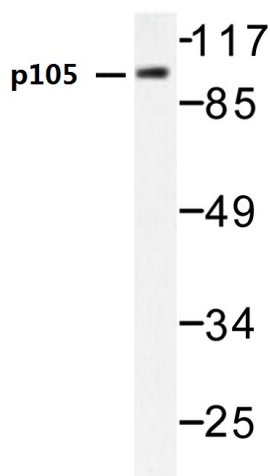
[View online »](#)

**Background:**

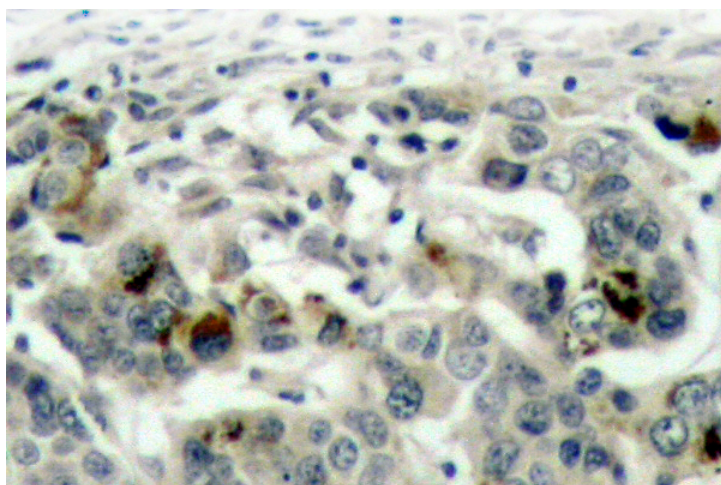
Proteins encoded by the v-Rel viral oncogene and its cellular homolog, c-Rel, are members of a family of transcription factors that include the two subunits of the transcription factor NFkappaB (p50 and p65) and the Drosophila maternal morphogen, dorsal. Both proteins specifically bind to DNA sequences that are the same or slight variations of the 10 bp kappaB sequence in the immunoglobulin kappa light chain enhancer. This same sequence is also present in a number of other cellular and viral enhancers. The DNA binding activity of NFkappaB is activated and NFkappaB is subsequently transported from the cytoplasm to the nucleus in cells exposed to mitogens or growth factors. cDNAs encoding precursors for two distinct proteins of the same size have been described, designated p105 and p100. The p105 precursor contains p50 at its N-terminus and a C-terminal region that when expressed as a separate molecule, designated pDI, binds to p50 and regulates its activity.

**Synonyms:**

NFKB1, KBF1, EBP-1, EBP1, NF-kappa-B p50

**Product images:**


Western blot (WB) analysis of NfκB-p105 antibody in extracts from HeLa cells.



Immunohistochemistry (IHC) analyzes of NfκB-p105 antibody in paraffin-embedded human breast carcinoma tissue.