

Product datasheet for **AP06241PU-M**

NFkB p100 / p52 (NFKB2) Rabbit Polyclonal Antibody

Product data:

Product Type:	Primary Antibodies
Applications:	IHC, WB
Recommended Dilution:	Western blot: 1/500-1/1000. Immunohistochemistry on paraffin sections: 1/50-1/200.
Reactivity:	Human, Mouse
Host:	Rabbit
Clonality:	Polyclonal
Immunogen:	Synthetic peptide, corresponding to amino acids 836-886 of Human NFkB-p100.
Specificity:	This antibody detects endogenous levels of NFkB-p100/p52 protein. (region surrounding Thr859)
Formulation:	Phosphate buffered saline (PBS), pH 7.2. State: Aff - Purified State: Liquid purified Ig fraction (> 95% pure by SDS-PAGE) Preservative: 0.05% sodium azide
Concentration:	1.0 mg/ml
Purification:	Affinity-chromatography using epitope-specific immunogen and the purity is > 95% (by SDS-PAGE)
Conjugation:	Unconjugated
Storage:	Store undiluted at 2-8°C for one month or (in aliquots) at -20°C for longer. Avoid repeated freezing and thawing.
Stability:	Shelf life: one year from despatch.
Predicted Protein Size:	~ 100, 120 kDa
Gene Name:	nuclear factor kappa B subunit 2
Database Link:	Entrez Gene 4791 Human Q00653



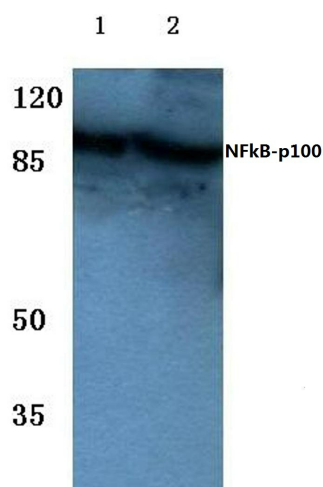
[View online »](#)

Background:

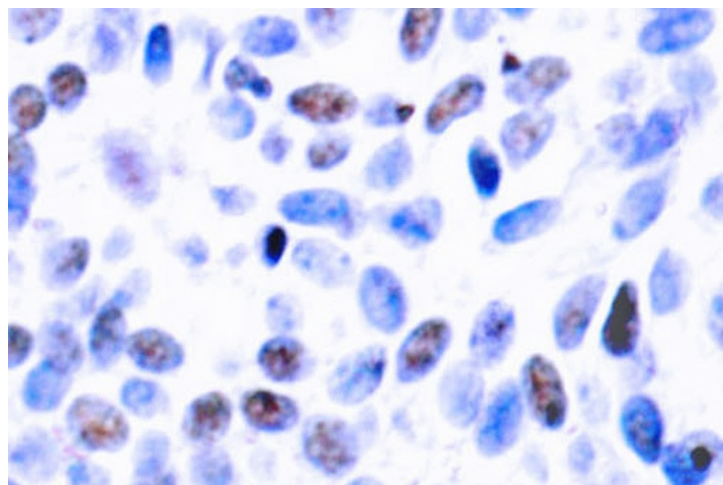
The NFkappaB transcription factor was originally identified as a protein complex consisting of a DNA binding subunit and an associated protein. The subunit is functionally related to c-Rel p75 and Rel B p68. The p50 subunit was initially believed to be a functionally unique protein derived from the amino-terminus of a precursor designated p105. A cDNA has been isolated that encodes an alternative DNA binding subunit of NFkappaB. It is synthesized as a protein that is expressed in a variety of cell types and, like p105, undergoes cleavage to generate its NFkappaB subunit, in this case a protein designated p52 (previously referred to as p49). In contrast to p50 derived from p105, p52 acts in synergy with p65 to stimulate the HIV enhancer in transiently transfected Jurkat cells.

Synonyms:

LYT10, KBF2, H2TF1, NF-kB p100, NF-kB p52, NF kappa B

Product images:


Western blot (WB) analysis of NFkB-p100 antibody at 1/500 dilution Lane 1:HEK293T cell lysate Lane 2:Mouse liver tissue lysate



Immunohistochemistry (IHC) analyzes of NFkB-p100/p52 antibody in paraffin-embedded human breast carcinoma tissue.