

Product datasheet for **AP06235PU-M**

MMP8 Rabbit Polyclonal Antibody

Product data:

Product Type:	Primary Antibodies
Applications:	IHC, WB
Recommended Dilution:	Western blot: 1/500-1/1000. Immunohistochemistry on paraffin sections 1/50-1/200.
Reactivity:	Human, Mouse, Rat
Host:	Rabbit
Clonality:	Polyclonal
Immunogen:	Synthetic peptide, corresponding to amino acids 415-460 of Human MMP-8.
Specificity:	This antibody detects endogenous levels of MMP-8 protein. (region surrounding Phe445)
Formulation:	Phosphate buffered saline (PBS), pH 7.2 State: Aff - Purified State: Liquid purified Ig fraction (>95% pure by SDS-PAGE). Preservative: 0.05% Sodium Azide
Concentration:	1.0 mg/ml
Purification:	Affinity Chromatography using epitope-specific Immunogen.
Conjugation:	Unconjugated
Storage:	Store undiluted at 2-8°C for one month or (in aliquots) at -20°C for longer. Avoid repeated freezing and thawing.
Stability:	Shelf life: one year from despatch.
Predicted Protein Size:	~ 55 kDa
Gene Name:	matrix metalloproteinase 8
Database Link:	<u>Entrez Gene 4317 Human P22894</u>



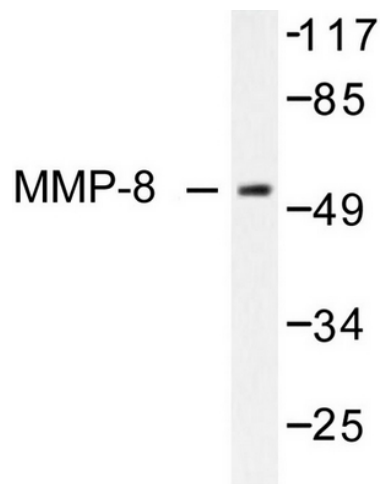
[View online »](#)

Background:

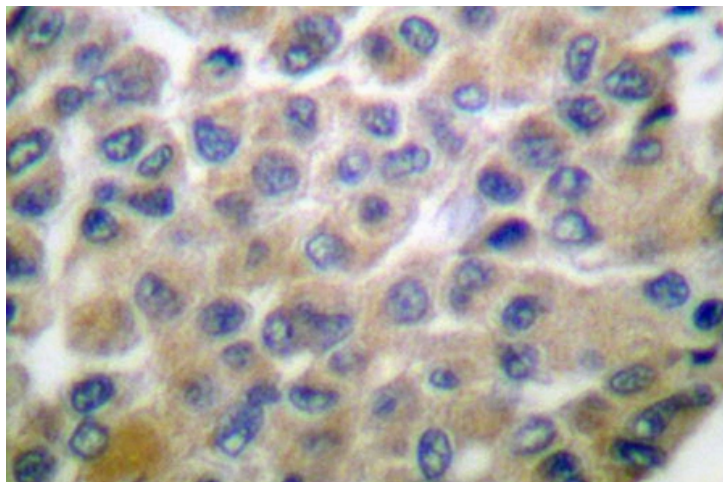
The matrix metalloproteinases (MMP) are a family of peptidase enzymes responsible for the degradation of extracellular matrix components, including collagen, gelatin, fibronectin, laminin and proteoglycan. Transcription of MMP genes is differentially activated by phorbol ester, lipopolysaccharide (LPS) or staphylococcal enterotoxin B (SEB). MMP catalysis requires both calcium and zinc. MMP-8 (also designated neutrophil collagenase, PMNL collagenase or collagenase-2) degrades fibrillar collagen types I, II and III. Unlike other members of the MMP family, MMP-8 is expressed exclusively in inflammatory conditions. MMP-8 is highly expressed in the postpartum uterus, and it is thought to be involved in the postpartum involution of the uterus. MMP-8 is also the predominant collagenase expressed in ulcers and healing wounds.

Synonyms:

Neutrophil collagenase, Matrix metalloproteinase-8, PMNL collagenase, MMP8, CLG1, PMNL-CL

Product images:


Western blot (WB) analysis of MMP-8 antibody in extracts from NIH/3T3 cells.



Immunohistochemistry (IHC) analyzes of MMP-8 antibody in paraffin-embedded human breast carcinoma tissue.