

## Product datasheet for **AP06233PU-M**

### MMP3 Rabbit Polyclonal Antibody

#### Product data:

Product Type:	Primary Antibodies
Applications:	ELISA, IHC, WB
Recommended Dilution:	<b>Western blot:</b> 1/500-1/1000. <b>Immunohistochemistry on Paraffin Sections:</b> 1/50-1/200. <b>Immunofluorescence:</b> 1/50-1/200.
Reactivity:	Human, Mouse, Rat
Host:	Rabbit
Clonality:	Polyclonal
Immunogen:	Synthetic peptide corresponding to amino acids 411-460 of Human MMP-3.
Specificity:	This antibody detects endogenous levels of MMP-3 protein. (region surrounding Ser453)
Formulation:	Phosphate buffered saline (PBS), pH 7.2 State: Aff - Purified State: Liquid purified Ig fraction (> 95% pure by SDS-PAGE) Preservative: 0.05% Sodium Azide
Concentration:	1.0 mg/ml
Purification:	Affinity chromatography using epitope-specific immunogen
Conjugation:	Unconjugated
Storage:	Store undiluted at 2-8°C for one month or (in aliquots) at -20°C for longer. Avoid repeated freezing and thawing.
Stability:	Shelf life: One year from despatch.
Predicted Protein Size:	~ 56 kDa
Gene Name:	matrix metalloproteinase 3
Database Link:	<a href="#">Entrez Gene 4314 Human P08254</a>



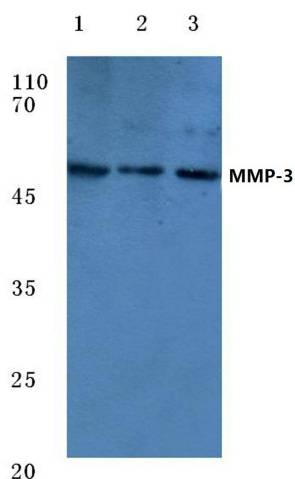
[View online »](#)

**Background:**

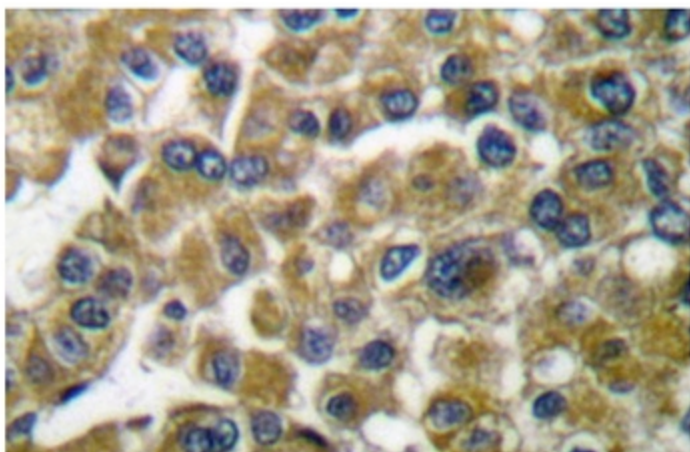
Proteins of the matrix metalloproteinase (MMP) family are involved in the breakdown of extracellular matrix in normal physiological processes, such as embryonic development, reproduction, and tissue remodeling, as well as in disease processes, such as arthritis and metastasis. Most MMP's are secreted as inactive proproteins which are activated when cleaved by extracellular proteinases. MMP3 is an enzyme which degrades fibronectin, laminin, collagens III, IV, IX, and X, and cartilage proteoglycans. The enzyme is thought to be involved in wound repair, progression of atherosclerosis, and tumor initiation. MMP3 is reported to be implicated in rheumatoid arthritis and some forms of cancer.

**Synonyms:**

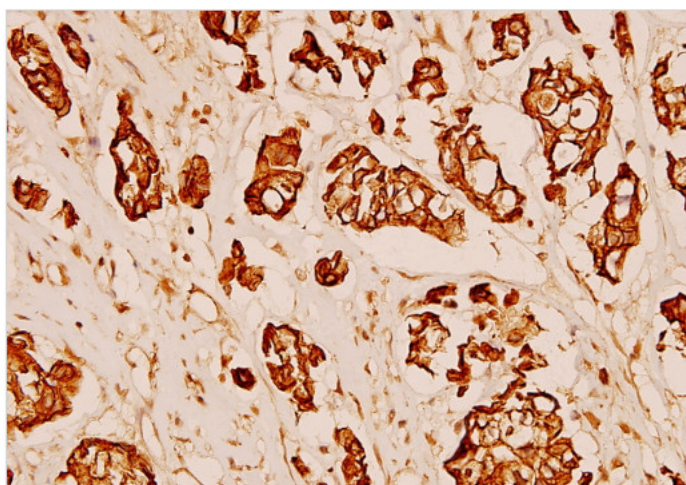
Stromelysin-1, SL-1, Matrix metalloproteinase-3, Transin-1, MMP3, STMY1

**Product images:**


Western blot (WB) analysis of MMP-3 antibody at 1/500 dilution: Lane 1: Hela whole cell lysate treated with PMA. Lane 2: Mouse heart tissue lysate. Lane 3: PC12 whole cell lysate treated with PMA.



Immunohistochemistry (IHC) analyzes of MMP-3 antibody in paraffin-embedded human breast carcinoma tissue.



Immunohistochemistry (IHC) analyzes of MMP-3 antibody in paraffin-embedded human breast carcinoma tissue at 1/100.