

## Product datasheet for **AP06232PU-S**

### **MMP23 (MMP23B) Rabbit Polyclonal Antibody**

#### **Product data:**

Product Type:	Primary Antibodies
Applications:	WB
Recommended Dilution:	<b>Western blot:</b> 1/500-1/1000.
Reactivity:	Human, Mouse, Rat
Host:	Rabbit
Clonality:	Polyclonal
Immunogen:	Synthetic peptide, corresponding to amino acids 341-390 of Human MMP-23.
Specificity:	This antibody detects endogenous levels of MMP-23 protein. (region surrounding Val371)
Formulation:	Phosphate buffered saline (PBS), pH 7.2. State: Aff - Purified State: Liquid purified Ig fraction Preservative: 0.05% sodium azide
Concentration:	1.0 mg/ml
Purification:	Affinity-chromatography using epitope-specific immunogen and the purity is > 95% (by SDS-PAGE)
Conjugation:	Unconjugated
Storage:	Store undiluted at 2-8°C for one month or (in aliquots) at -20°C for longer. Avoid repeated freezing and thawing.
Stability:	Shelf life: one year from despatch.
Predicted Protein Size:	~ 44 kDa
Gene Name:	matrix metalloproteinase 23B
Database Link:	<a href="#">Entrez Gene 8510 Human O75900</a>



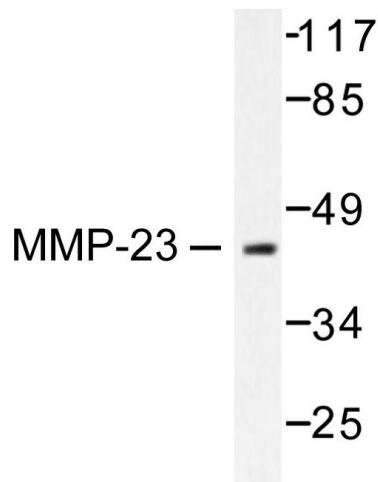
[View online »](#)

**Background:**

Matrix metalloproteinases (MMPs) are highly homologous Zn<sup>2+</sup> endopeptidases involved in extracellular matrix breakdown. MMP mediated extracellular remodeling occurs in normal physiological processes, such as embryonic development, reproduction and tissue remodeling, and disease processes, including arthritis and metastasis. MMP-23 exhibits sequence similarity with most MMPs, but displays a difference in domain structure. The MMP-23 protein contains prepro-, catalytic, cysteine-rich, Interleukin-1 receptor-related and proline-rich domains. Lacking a recognizable signal sequence, MMP-23 has a short prodomain. In addition, MMP-23 contains a single cysteine residue that can be part of the cysteine-switch mechanism operation for maintaining enzyme latency. MMP-23 is a membrane-anchored glycoprotein with type II topology. Subcellular localization is predominantly perinuclear.

**Synonyms:**

Matrix metalloproteinase-23, Matrix metallopeptidase 21, Matrix metalloprotease 22, Femalysin, MIFR-1, MMP23A, MMP21, MMP23B, MMP22

**Product images:**

Western blot (WB) analysis of MMP-23 antibody in extracts from SKOV3 cells.