

## Product datasheet for **AP06231PU-N**

### MMP2 Rabbit Polyclonal Antibody

#### Product data:

Product Type:	Primary Antibodies
Applications:	ELISA, WB
Recommended Dilution:	<b>Western blot:</b> 1/500-1/1000. <b>Immunohistochemistry on paraffin sections:</b> 1/50-1/200. <b>Immunofluorescence:</b> 1/50-1/200.
Reactivity:	Human, Mouse, Rat
Host:	Rabbit
Clonality:	Polyclonal
Immunogen:	Synthetic peptide, corresponding to amino acids 601-650 of Human MMP-2.
Specificity:	This antibody detects endogenous levels of MMP-2 protein. (region surrounding Leu638)
Formulation:	Phosphate buffered saline (PBS), pH 7.2. State: Aff - Purified State: Liquid purified Ig fraction Preservative: 0.05% sodium azide
Concentration:	1.0 mg/ml
Purification:	Affinity-chromatography using epitope-specific immunogen and the purity is > 95% (by SDS-PAGE)
Conjugation:	Unconjugated
Storage:	Store undiluted at 2-8°C for one month or (in aliquots) at -20°C for longer. Avoid repeated freezing and thawing.
Stability:	Shelf life: one year from despatch.
Predicted Protein Size:	~ 74 kDa
Gene Name:	matrix metalloproteinase 2
Database Link:	<a href="#">Entrez Gene 4313 Human P08253</a>



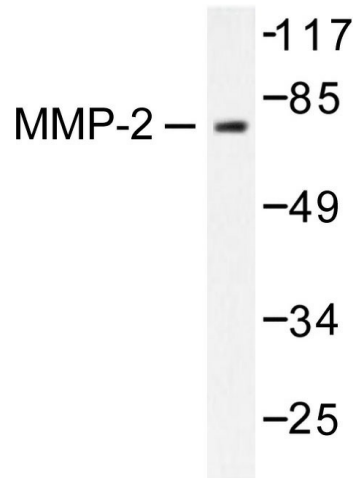
[View online »](#)

**Background:**

The matrix metalloproteinases (MMP) are a family of peptidase enzymes responsible for the degradation of extracellular matrix components, including collagen, gelatin, fibronectin, laminin and proteoglycan. Transcription of MMP genes is differentially activated by phorbol ester, lipopolysaccharide (LPS) or staphylococcal enterotoxin B (SEB). MMP catalysis requires both calcium and zinc. MMP-2 (also designated type IV collagenase) cleaves collagen types IV, V, VII and X and gelatin type I. Activation of MMP-2 secretion requires the Ras signaling pathway.

**Synonyms:**

MMP2, CLG4A, 72 kDa gelatinase, Matrix metalloproteinase-2, Gelatinase A, TBE-1

**Product images:**

Western blot (WB) analysis of MMP-2 antibody in extracts from LOVO cells.