

## Product datasheet for **AP06230PU-N**

### MMP19 Rabbit Polyclonal Antibody

#### Product data:

Product Type:	Primary Antibodies
Applications:	IHC, WB
Recommended Dilution:	<b>Western blot:</b> 1/500-1/1000. <b>Immunohistochemistry on Paraffin Sections:</b> 1/50-1/200.
Reactivity:	Human, Mouse
Host:	Rabbit
Clonality:	Polyclonal
Immunogen:	Synthetic peptide, corresponding to amino acids 12-60 of Human MMP-19.
Specificity:	This antibody detects endogenous levels of MMP-19 protein. (region surrounding Gly44)
Formulation:	Phosphate buffered saline (PBS), pH 7.2. State: Aff - Purified State: Liquid purified Ig fraction (> 95% pure by SDS-PAGE) Preservative: 0.05% Sodium Azide
Concentration:	1.0 mg/ml
Purification:	Affinity Chromatography using epitope-specific immunogen
Conjugation:	Unconjugated
Storage:	Store undiluted at 2-8°C for one month or (in aliquots) at -20°C for longer. Avoid repeated freezing and thawing.
Stability:	Shelf life: one year from despatch.
Predicted Protein Size:	~57 kDa
Gene Name:	matrix metalloproteinase 19
Database Link:	<a href="#">Entrez Gene 4327 Human Q99542</a>



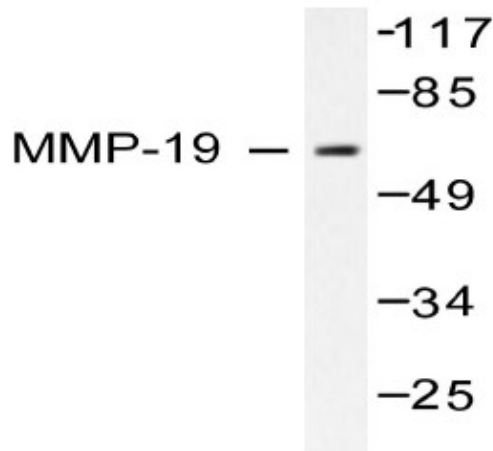
[View online »](#)

**Background:**

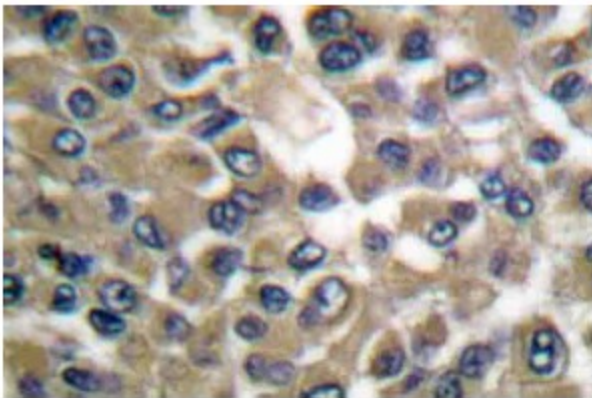
The matrix metalloproteinases (MMP) are a family of peptidase enzymes responsible for the degradation of extracellular matrix components, including collagen, gelatin, fibronectin, laminin and proteoglycan. Transcription of MMP genes is differentially activated by phorbol ester, lipopolysaccharide (LPS) or staphylococcal enterotoxin B (SEB). MMP catalysis requires both calcium and zinc. MMP-13 (also designated collagenase-3) is produced by breast carcinomas and degrades collagen types I, II and III. MMP-13 has wide substrate specificity, and its physiologic expression is limited to situations in which rapid and effective remodeling of collagenous ECM takes place, such as fetal bone development and adult bone remodeling.

**Synonyms:**

MMP19, MMP18, RASI, Matrix metalloproteinase-19, Matrix metalloproteinase RASI, MMP-18

**Product images:**

Western blot (WB) analysis of MMP-19 antibody in extracts from HuvEc cells.



Immunohistochemistry (IHC) analyzes of MMP-19 antibody in paraffin-embedded human breast carcinoma tissue.