

Product datasheet for **AP06229PU-S**

MMP16 Rabbit Polyclonal Antibody

Product data:

Product Type:	Primary Antibodies
Applications:	IHC, WB
Recommended Dilution:	Western blot: 1/500-1/1000. Immunohistochemistry on paraffin sections: 1/50-1/200.
Reactivity:	Human, Mouse, Rat
Host:	Rabbit
Clonality:	Polyclonal
Immunogen:	Synthetic peptide, corresponding to amino acids 550-600 of Human MMP-16.
Specificity:	This antibody detects endogenous levels of MMP-16 protein. (region surrounding Thr583)
Formulation:	State: Aff - Purified State: Liquid purified Ig fraction
Concentration:	1.0 mg/ml
Purification:	Affinity-chromatography using epitope-specific immunogen and the purity is > 95% (by SDS-PAGE)
Conjugation:	Unconjugated
Storage:	Store undiluted at 2-8°C for one month or (in aliquots) at -20°C for longer. Avoid repeated freezing and thawing.
Stability:	Shelf life: one year from despatch.
Predicted Protein Size:	~ 68 kDa
Gene Name:	matrix metalloproteinase 16
Database Link:	Entrez Gene 4325 Human P51512



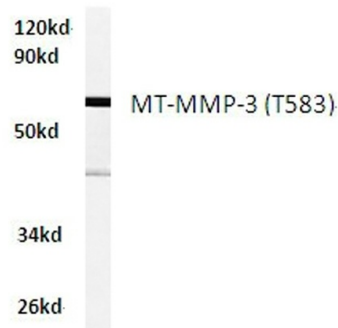
[View online »](#)

Background:

The matrix metalloproteinases (MMP) are a family of peptidase enzymes responsible for the degradation of extracellular matrix components, including collagen, gelatin, fibronectin, laminin and proteoglycan. Transcription of MMP genes is differentially activated by phorbol ester, lipopolysaccharide (LPS) or staphylococcal enterotoxin B (SEB). MMP catalysis requires both calcium and zinc. MMP-13 (also designated collagenase-3) is produced by breast carcinomas and degrades collagen types I, II and III. MMP-13 has wide substrate specificity, and its physiologic expression is limited to situations in which rapid and effective remodeling of collagenous ECM takes place, such as fetal bone development and adult bone remodeling.

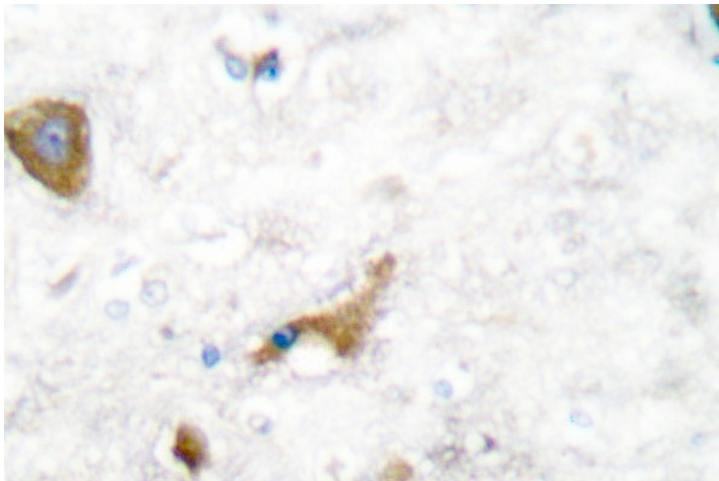
Synonyms:

Matrix metalloproteinase-16, MMP-X2, MMP16, MMPX2, Membrane-type-3 matrix metalloproteinase

Product images:


Raw264.7 whole cell lysate
MT-MMP-3(T583) pAb at 1:500 dilution

Western blot (WB) analysis of MMP-16 antibody (Cat.-No.: [AP06229PU-N]) in extracts from raw264.7 cells.



Immunohistochemistry (IHC) analyzes of MMP-16 antibody (Cat.-No.: [AP06229PU-N]) in paraffin-embedded human brain tissue.