

Product datasheet for **AP06227PU-M**

MMP14 Rabbit Polyclonal Antibody

Product data:

Product Type:	Primary Antibodies
Applications:	IHC, WB
Recommended Dilution:	Western blot: 1/500-1/1000. Immunohistochemistry on paraffin sections: 1/50-1/200.
Reactivity:	Human, Mouse, Rat
Host:	Rabbit
Clonality:	Polyclonal
Immunogen:	Synthetic peptide, corresponding to amino acids 480-520 of Human MMP-14.
Specificity:	This antibody detects endogenous levels of MMP-14 protein. (region surrounding Pro509)
Formulation:	Phosphate buffered saline (PBS), pH 7.2. State: Aff - Purified State: Liquid purified Ig fraction with 50% Glycerol Preservative: 0.02% sodium azide
Concentration:	1.0 mg/ml
Purification:	Affinity-chromatography using epitope-specific immunogen and the purity is > 95% (by SDS-PAGE)
Conjugation:	Unconjugated
Storage:	Store undiluted at 2-8°C for one month or (in aliquots) at -20°C for longer. Avoid repeated freezing and thawing.
Stability:	Shelf life: one year from despatch.
Predicted Protein Size:	~ 53, 65 kDa
Gene Name:	matrix metalloproteinase 14
Database Link:	Entrez Gene 4323 Human P50281



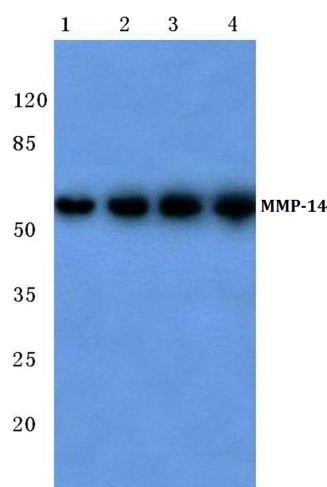
[View online »](#)

Background:

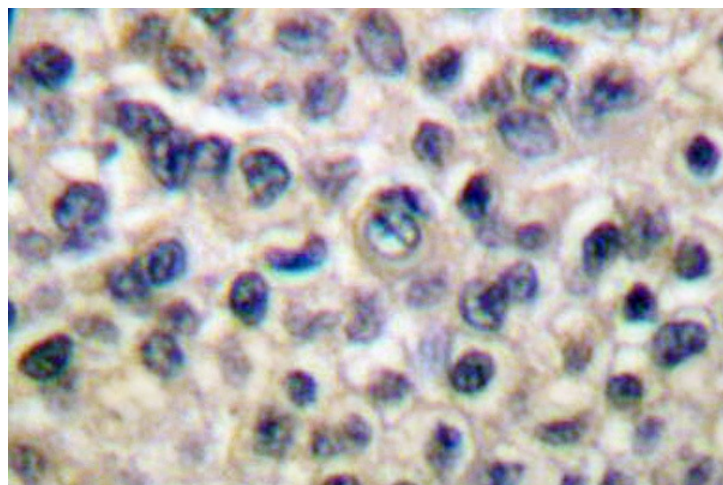
The matrix metalloproteinases (MMP) are a family of peptidase enzymes responsible for the degradation of extracellular matrix components, including collagen, gelatin, fibronectin, laminin and proteoglycan. Transcription of MMP genes is differentially activated by phorbol ester, lipopolysaccharide (LPS) or staphylococcal enterotoxin B (SEB). MMP catalysis requires both calcium and zinc. Membrane-type matrix metalloproteinases, including MT-MMP-1 (also designated MMP-14), MT-MMP-2 (also designated MMP-15), MT-MMP-3 (also designated MMP-16) and MT-MMP-4 (also designated MMP-17) are type I membrane proteins that function to activate other MMPs. MT-MMP activation appears to be mediated by members of the proprotein convertase family, suggesting that a proprotein convertase/MT-MMP/MMP cascade may be involved in the regulation of ECM turnover.

Synonyms:

Matrix metalloproteinase-14, MMP14, MMP-X1, Membrane-type-1 matrix metalloproteinase

Product images:


Western blot (WB) analysis of MMP-14 antibody at 1/500 dilution Lane 1:Hela whole cell lysate Lane 2:Mouse kidney tissue lysate Lane 3:H9C2 whole cell lysate Lane 4:SP2/0 whole cell lysate



Immunohistochemistry (IHC) analyzes of MMP-14 antibody in paraffin-embedded human breast carcinoma tissue.