

Product datasheet for **AP06226PU-N**

MMP13 Rabbit Polyclonal Antibody

Product data:

Product Type:	Primary Antibodies
Applications:	IF, IHC, WB
Recommended Dilution:	Western blot: 1/500-1/1000. Immunohistochemistry on paraffin sections: 1/50-1/200. Immunofluorescence: 1/50-1/200.
Reactivity:	Human
Host:	Rabbit
Clonality:	Polyclonal
Immunogen:	Synthetic peptide, corresponding to amino acids N-terminus of Human MMP-13.
Specificity:	This antibody detects endogenous levels of MMP-13 protein. (region surrounding Leu22)
Formulation:	Phosphate buffered saline (PBS), pH 7.2. State: Aff - Purified State: Liquid purified Ig fraction Preservative: 0.05% sodium azide
Concentration:	1.0 mg/ml
Purification:	Affinity-chromatography using epitope-specific immunogen and the purity is > 95% (by SDS-PAGE)
Conjugation:	Unconjugated
Storage:	Store undiluted at 2-8°C for one month or (in aliquots) at -20°C for longer. Avoid repeated freezing and thawing.
Stability:	Shelf life: one year from despatch.
Predicted Protein Size:	~ 48, 60 kDa
Gene Name:	matrix metalloproteinase 13
Database Link:	Entrez Gene 4322 Human P45452



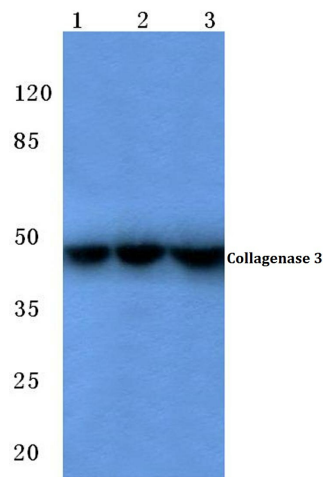
[View online »](#)

Background:

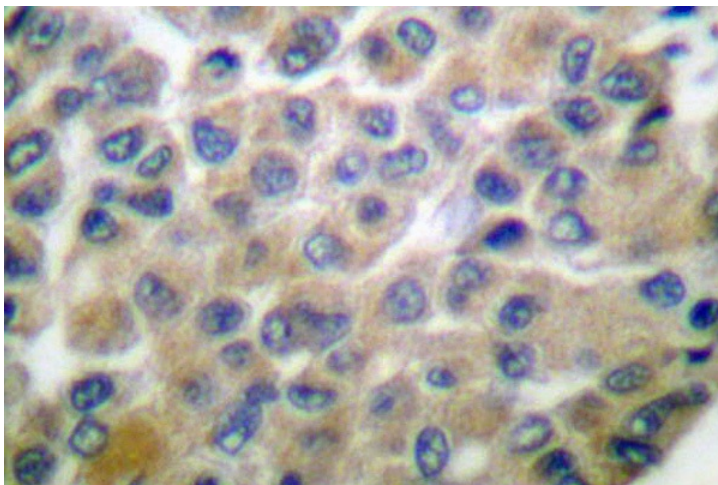
The matrix metalloproteinases (MMP) are a family of peptidase enzymes responsible for the degradation of extracellular matrix components, including collagen, gelatin, fibronectin, laminin and proteoglycan. Transcription of MMP genes is differentially activated by phorbol ester, lipopolysaccharide (LPS) or staphylococcal enterotoxin B (SEB). MMP catalysis requires both calcium and zinc. MMP-12 (also designated macrophage metalloelastase) is produced in alveolar macrophages and degrades elastin. MMP-12 may contribute to elastin degradation occurring in granulomatous skin diseases and may also participate in macrophage migration through the epidermal and vascular basement membranes in inflammatory disorders.

Synonyms:

Collagenase 3, MMP13, Matrix metalloproteinase-13

Product images:

Western blot (WB) analysis of MMP-13 antibody at 1/500 dilution. Lane 1: Hela whole cell lysate treated with IL-1 β . Lane 2: sp2/0 whole cell lysate treated with IL-1 β . Lane 3: H9C2 whole cell lysate treated with IL-1 β .



Immunohistochemistry (IHC) analysis of MMP-13 antibody in paraffin-embedded human breast carcinoma tissue.