

## Product datasheet for **AP06225PU-M**

### **MMP11 Rabbit Polyclonal Antibody**

#### **Product data:**

Product Type:	Primary Antibodies
Applications:	IF, IHC, WB
Recommended Dilution:	<b>Western blot:</b> 1/500-1/1000. <b>Immunohistochemistry on paraffin sections:</b> 1/50-1/200. <b>Immunofluorescence:</b> 1/50-1/200.
Reactivity:	Human, Mouse, Rat
Host:	Rabbit
Clonality:	Polyclonal
Immunogen:	Synthetic peptide, corresponding to amino acids 55-100 of Human MMP-11
Specificity:	This antibody detects endogenous levels of MMP-11 protein. (region surrounding Gly88)
Formulation:	Phosphate buffered saline (PBS), pH 7.2. State: Aff - Purified State: Liquid purified Ig fraction Preservative: 15 mM sodium azide
Concentration:	1.0 mg/ml
Purification:	Affinity-chromatography using epitope-specific immunogen and the purity is > 95% (by SDS-PAGE)
Conjugation:	Unconjugated
Storage:	Store undiluted at 2-8°C for one month or (in aliquots) at -20°C for longer. Avoid repeated freezing and thawing.
Stability:	Shelf life: one year from despatch.
Predicted Protein Size:	~ 52 kDa
Gene Name:	matrix metalloproteinase 11
Database Link:	<a href="#">Entrez Gene 4320 Human P24347</a>



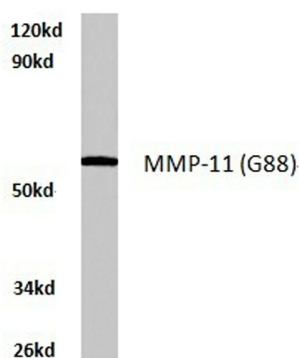
[View online »](#)

**Background:**

The matrix metalloproteinases (MMP) are a family of peptidase enzymes responsible for the degradation of extracellular matrix components, including collagen, gelatin, fibronectin, laminin and proteoglycan. Transcription of MMP genes is differentially activated by phorbol ester, lipopolysaccharide (LPS) or taphylococcal enterotoxin B (SEB). MMP catalysis requires both calcium and zinc. MMP-3, MMP-10 and MMP-11 (also designated stromelysin- 1, -2 and -3) activate procollagenase. MMP-3 activation of procollagenase can occur via two pathways. Direct activation by MMP-3 is slow and activation by MMP-3 in conjunction with tissue or plasma proteinases is rapid. MMP-10 is expressed in small intestine, and it is expressed at lower levels in lung and heart. MMP-11 is specifically expressed in stromal cells of breast carcinomas and contributes to epithelial cell malignancies.

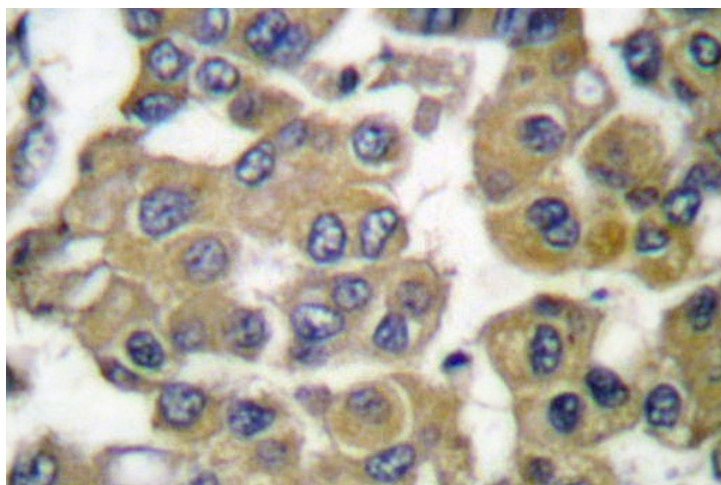
**Synonyms:**

MMP11, Stromelysin-3, SL-3, ST3, STMY3, Matrix metalloproteinase-11

**Product images:**


Raw264.7 whole cell lysate  
MMP-11(G88) pAb at 1:500 dilution

Western blot (WB) analysis of MMP-11 antibody in extracts from raw264.7 cells.



Immunohistochemistry (IHC) analyzes of MMP-11 antibody in paraffin-embedded human breast carcinoma tissue.