

## Product datasheet for **AP06223PU-M**

### MEK6 (MAP2K6) Rabbit Polyclonal Antibody

#### Product data:

Product Type:	Primary Antibodies
Applications:	IHC, WB
Recommended Dilution:	<b>Western blot:</b> 1/500-1/1000. <b>Immunohistochemistry on paraffin sections</b> 1/50-1/200.
Reactivity:	Human, Mouse
Host:	Rabbit
Clonality:	Polyclonal
Immunogen:	Synthetic peptide, corresponding to amino acids 270-320 of Human MEK-6.
Specificity:	This antibody detects endogenous levels of MKK6 protein. (region surrounding Ser201)
Formulation:	Phosphate buffered saline (PBS), pH 7.2. State: Aff - Purified State: Liquid purified Ig fraction Preservative: 0.05% sodium azide
Concentration:	1.0 mg/ml
Purification:	Affinity-chromatography using epitope-specific immunogen and the purity is > 95% (by SDS-PAGE)
Conjugation:	Unconjugated
Storage:	Store undiluted at 2-8°C for one month or (in aliquots) at -20°C for longer. Avoid repeated freezing and thawing.
Stability:	Shelf life: one year from despatch.
Predicted Protein Size:	~ 37 kDa
Gene Name:	mitogen-activated protein kinase kinase 6
Database Link:	<a href="#">Entrez Gene 5608 Human</a> <a href="#">P52564</a>

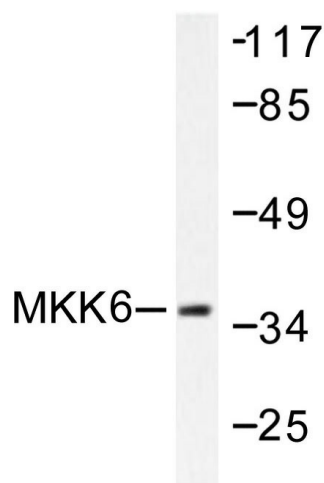


[View online »](#)

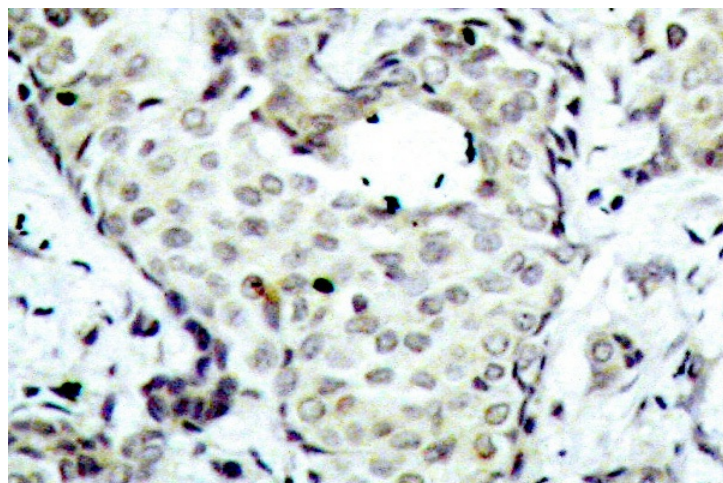
**Background:** Mitogen activated protein kinase kinase 6 (MEK6 or MKK6) belongs to the serine/threonine protein kinase family and the MAPK kinase subfamily (MAP2K, MKK or MEKs). MEK6, closely related to MEK3, catalyzes the concomitant phosphorylation of a threonine and a tyrosine residue in MAP kinase p38, thus activating it, in response to inflammatory cytokines and environmental stress.

**Synonyms:** MAPKK 6, MAPK/ERK kinase 6, SAPKK3, MEK6, MKK6, MAP kinase kinase 6

**Product images:**



Western blot (WB) analysis of MKK6 antibody in extracts from MDA-MB-435 cells.



Immunohistochemistry (IHC) analyzes of MKK6 antibody in paraffin-embedded human breast carcinoma tissue.