

Product datasheet for **AP06219PU-M**

MEF2A Rabbit Polyclonal Antibody

Product data:

Product Type:	Primary Antibodies
Applications:	IHC, WB
Recommended Dilution:	Western blot: 1/500-1/1000. Immunohistochemistry on paraffin sections: 1/50-1/200.
Reactivity:	Human, Mouse
Host:	Rabbit
Clonality:	Polyclonal
Immunogen:	Synthetic peptide, corresponding to amino acids 280-330 of Human MEF-2.
Specificity:	This antibody detects endogenous levels of MEF2A protein. (region surrounding Ala306)
Formulation:	Phosphate buffered saline (PBS), pH 7.2. State: Aff - Purified State: Liquid purified Ig fraction Preservative: 0.05% sodium azide
Concentration:	1.0 mg/ml
Purification:	Affinity-chromatography using epitope-specific immunogen and the purity is > 95% (by SDS-PAGE)
Conjugation:	Unconjugated
Storage:	Store undiluted at 2-8°C for one month or (in aliquots) at -20°C for longer. Avoid repeated freezing and thawing.
Stability:	Shelf life: one year from despatch.
Predicted Protein Size:	~ 55 kDa
Gene Name:	myocyte enhancer factor 2A
Database Link:	Entrez Gene 4205 Human Q02078



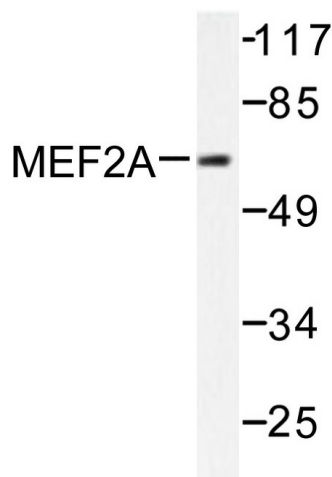
[View online »](#)

Background:

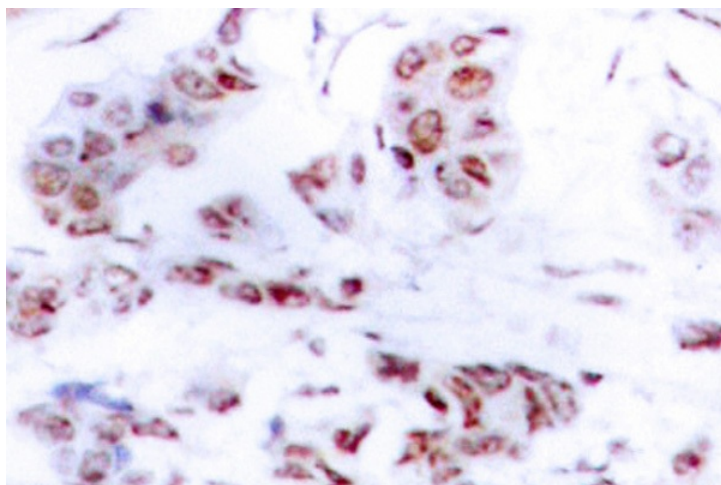
The myocyte enhancer factor-2 (MEF-2) family of transcription factors associated with co-repressors or co-activators to regulate development and function of T cells, neuronal cells and muscle cells. Four family members arise from alternatively spliced transcripts, termed MEF-2A, -2B, -2C and -2D. These members bind as homo- and heterodimers to the MEF-2 site in the promoter region of affected genes. Differential regulation in the expression of the four transcripts implies functional distinction for each during embryogenesis and development. The process of differentiation from mesodermal precursor cells to myoblasts has led to the discovery of a variety of tissue-specific factors that regulate muscle gene expression. The myogenic basic helix-loop-helix proteins, including MyoD, myogenin, Myf-5 and MRF4, are one class of identified factors. A second family of DNA binding regulatory proteins is the myocyte-specific enhancer factor-2 (MEF-2) family. Each of these proteins binds to the MEF-2 target DNA sequence present in the regulatory regions of many muscle-specific genes.

Synonyms:

MEF2, Myocyte-specific enhancer factor 2A

Product images:


Western blot (WB) analysis of MEF2A antibody in extracts from NIH/3T3 cells treated with PMA.



Immunohistochemistry (IHC) analyzes of MEF2A antibody in paraffin-embedded human breast carcinoma tissue.