

## Product datasheet for **AP06216PU-M**

### MCM2 Rabbit Polyclonal Antibody

#### Product data:

Product Type:	Primary Antibodies
Applications:	IF, IHC, WB
Recommended Dilution:	<b>Western blot:</b> 1/500-1/1000. <b>Immunohistochemistry on paraffin sections:</b> 1/50-1/200. <b>Immunofluorescence:</b> 1/50-1/200.
Reactivity:	Human, Mouse
Host:	Rabbit
Clonality:	Polyclonal
Immunogen:	Synthetic peptide, corresponding to amino acids N-terminus of Human MCM2.
Specificity:	This antibody detects endogenous levels of MCM2 protein. (region surrounding Ala11)
Formulation:	Phosphate buffered saline (PBS), pH 7.2. State: Aff - Purified State: Liquid purified Ig fraction Preservative: 0.05% sodium azide
Concentration:	1.0 mg/ml
Purification:	Affinity-chromatography using epitope-specific immunogen and the purity is > 95% (by SDS-PAGE)
Conjugation:	Unconjugated
Storage:	Store undiluted at 2-8°C for one month or (in aliquots) at -20°C for longer. Avoid repeated freezing and thawing.
Stability:	Shelf life: one year from despatch.
Predicted Protein Size:	~ 100, 120 kDa
Gene Name:	minichromosome maintenance complex component 2
Database Link:	<a href="#">Entrez Gene 4171 Human P49736</a>



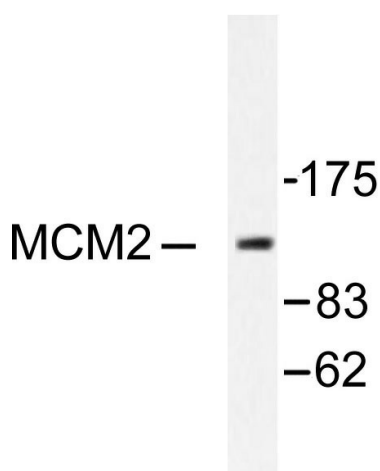
[View online »](#)

**Background:**

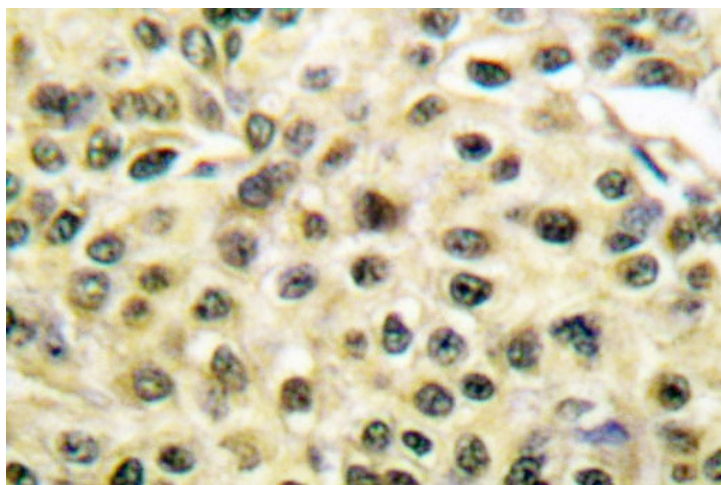
The mini-chromosome maintenance (MCM) family of proteins, including MCM2, MCM3, MCM4 (Cdc21), MCM5 (Cdc46), MCM6 (Mis5) and MCM7 (Cdc47), are regulators of DNA replication that act to ensure replication occurs only once in the cell cycle. Expression of MCM proteins increases during cell growth, peaking at G1 to S phase. The MCM proteins each contain an ATPbinding motif, which is predicted to mediate ATP-dependent opening of doublestranded DNA. MCM proteins are regulated by E2F transcription factors, which induce MCM expression, and by protein kinases, which interact with MCM proteins to maintain the ostreplicative state of the cell. MCM2/MCM4 complexes function as substrates for Cdc2/cyclin B in vitro. Cleavage of MCM3, which can be prevented by caspase inhibitors, results in the inactivation of the MCM complex (composed of at least MCM proteins 2 - 6) during apoptosis. A complex composed of MCM4, MCM6 and MCM7 has been shown to be involved in DNA helicase activity; and MCM5 is involved in IFN- $\gamma$ -induced Stat1 $\alpha$  transcription activation.

**Synonyms:**

BM28, CCNL1, CDCL1, Nuclear protein BM28

**Product images:**


Western blot (WB) analysis of MCM2 antibody in extracts from 293 cells.



Immunohistochemistry (IHC) analyzes of MCM2 antibody in paraffin-embedded human breast carcinoma tissue