

## Product datasheet for **AP06215PU-S**

### MCL1 Rabbit Polyclonal Antibody

#### Product data:

Product Type:	Primary Antibodies
Applications:	IHC, WB
Recommended Dilution:	<b>Western blot:</b> 1/500-1/1000. <b>Immunohistochemistry on paraffin sections:</b> 1/50-1/200.
Reactivity:	Human, Mouse, Rat
Host:	Rabbit
Clonality:	Polyclonal
Immunogen:	Synthetic peptide, corresponding to amino acids 100-150 of Human Mcl-1.
Specificity:	This antibody detects endogenous levels of MCL1 protein. (region surrounding Ser121)
Formulation:	Phosphate buffered saline (PBS), pH 7.2. State: Aff - Purified State: Liquid purified Ig fraction Preservative: 0.05% sodium azide
Concentration:	1.0 mg/ml
Purification:	Affinity-chromatography using epitope-specific immunogen and the purity is > 95% (by SDS-PAGE)
Conjugation:	Unconjugated
Storage:	Store undiluted at 2-8°C for one month or (in aliquots) at -20°C for longer. Avoid repeated freezing and thawing.
Stability:	Shelf life: one year from despatch.
Predicted Protein Size:	~ 37 kDa
Gene Name:	myeloid cell leukemia 1
Database Link:	<a href="#">Entrez Gene 4170 Human Q07820</a>



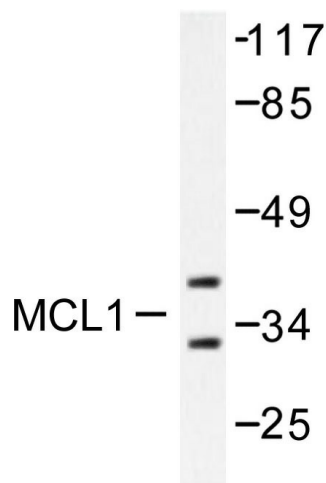
[View online »](#)

**Background:**

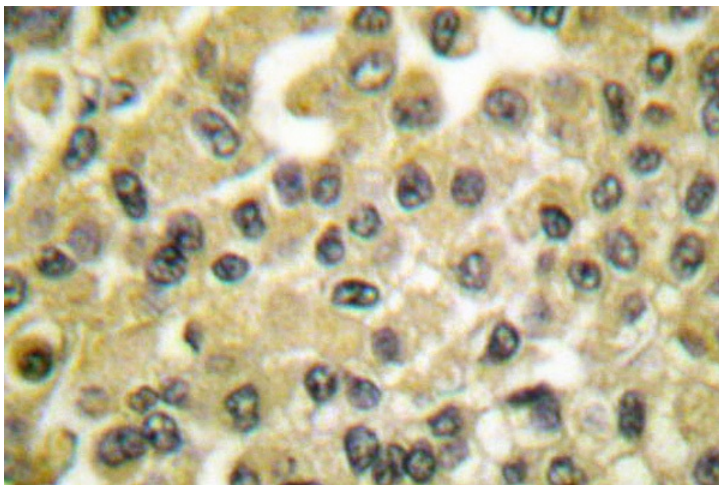
B cell CLL/lymphoma-2 (Bcl-2) blocks cell death following a variety of stimuli and confers a death-sparing effect to certain hematopoietic cell lines following growth factor withdrawal. Myeloid cell leukemia-1 (Mcl-1) shares sequence homology with Bcl-2 and further resembles Bcl-2 in that its expression promotes cell viability. p53 and Mcl-1 demonstrate opposing effects on mitochondrial apoptosis by mediating Bcl-2 antagonist killer (Bak) activity. Mcl-1 is an important and specific regulator that is necessary for the homeostasis of early hematopoietic progenitors. Glycogen synthase kinase-3 (GSK-3) controls Mcl-1 stability, which has an effect on the regulation of apoptosis by growth factors PI 3-kinase and Akt. Mice with a deficiency of the Mcl-1 protein show a significant reduction in B and T lymphocytes similar to the effects observed in IL-7- or IL-7R-deficient mice.

**Synonyms:**

BCL2L3, Bcl-2-like protein 3, mcl1/EAT, EAT, r004

**Product images:**

Western blot (WB) analysis of MCL1 antibody in extracts from Raji cells.



Immunohistochemistry (IHC) analyzes of MCL1 antibody in paraffin-embedded human breast carcinoma tissue.