

Product datasheet for **AP06214PU-M**

MelanA (MLANA) Rabbit Polyclonal Antibody

Product data:

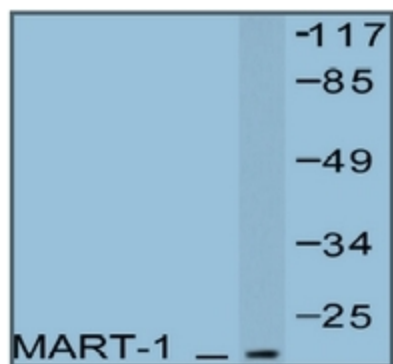
Product Type:	Primary Antibodies
Applications:	IHC, WB
Recommended Dilution:	Western blot: 1/500-1/1000. Immunohistochemistry on Paraffin Sections: 1/50-1/200.
Reactivity:	Human
Host:	Rabbit
Clonality:	Polyclonal
Immunogen:	Synthetic peptide, corresponding to amino acids 43-96 of Human Melan-A.
Specificity:	This antibody detects endogenous levels of MART-1/MLANA protein. (region surrounding Pro75)
Formulation:	Phosphate buffered saline (PBS), pH~7.2 State: Aff - Purified State: Liquid purified Ig fraction (> 95% pure by SDS-PAGE) Preservative: 0.05% Sodium Azide
Concentration:	1.0 mg/ml
Purification:	Affinity Chromatography using epitope-specific immunogen
Conjugation:	Unconjugated
Storage:	Store undiluted at 2-8°C for one month or (in aliquots) at -20°C for longer. Avoid repeated freezing and thawing.
Stability:	Shelf life: one year from despatch.
Predicted Protein Size:	~ 15 kDa
Gene Name:	melan-A
Database Link:	Entrez Gene 2315 Human Q16655
Background:	MelanA or MART1 (Melanoma Antigen Recognized by T cells) or is a newly identified melanocyte differentiation antigen recognized by autologous cytotoxic T lymphocytes. Seven other melanoma associated antigens recognized by autologous cytotoxic T cells include MAGE1, MAGE3, tyrosinase, gp100, gp75, BAGE1, and GAGE1.



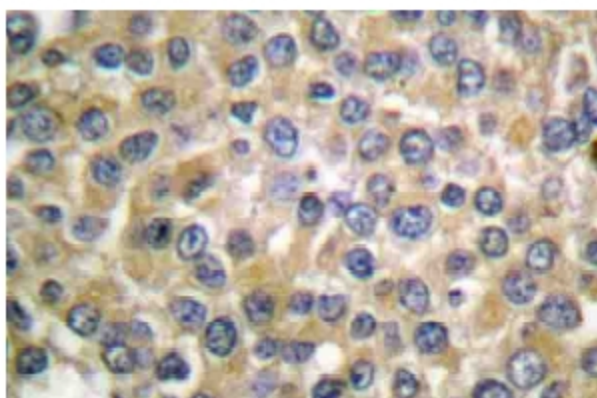
[View online »](#)

Synonyms: Melan-A protein, MLANA, Antigen SK29-AA, LB39-AA, MelanA, MART1

Product images:



Western blot analysis of MART-1 Antibody in extracts from NIH/3T3 cells.



Immunohistochemistry analysis of MART-1 Antibody in paraffin-embedded human breast carcinoma tissue.