

Product datasheet for **AP06212PU-M**

MAGE 1 (MAGEA1) Rabbit Polyclonal Antibody

Product data:

Product Type:	Primary Antibodies
Applications:	IHC, WB
Recommended Dilution:	Western blot: 1/500-1/1000. Immunohistochemistry on paraffin sections 1/50-1/200.
Reactivity:	Human
Host:	Rabbit
Clonality:	Polyclonal
Immunogen:	Synthetic peptide, corresponding to amino acids 280-320 of Human MAGE-1.
Specificity:	This antibody detects endogenous levels of MAGE-1/Tumor antigen MAGE-N protein. (region surrounding Phe293)
Formulation:	Phosphate buffered saline (PBS), pH 7.2. State: Aff - Purified State: Liquid purified Ig fraction Preservative: 0.05% sodium azide
Concentration:	1.0 mg/ml
Purification:	Affinity-chromatography using epitope-specific immunogen and the purity is > 95% (by SDS-PAGE)
Conjugation:	Unconjugated
Storage:	Store undiluted at 2-8°C for one month or (in aliquots) at -20°C for longer. Avoid repeated freezing and thawing.
Stability:	Shelf life: one year from despatch.
Predicted Protein Size:	~ 34 kDa
Gene Name:	MAGE family member A1
Database Link:	Entrez Gene 4100 Human P43355



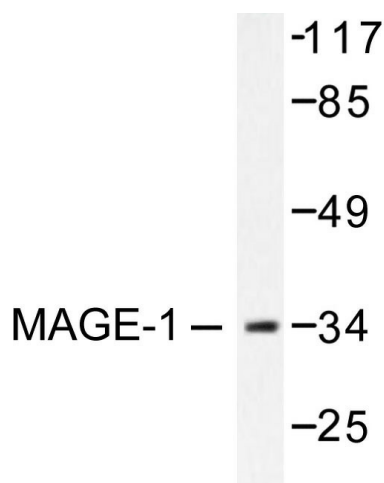
[View online »](#)

Background:

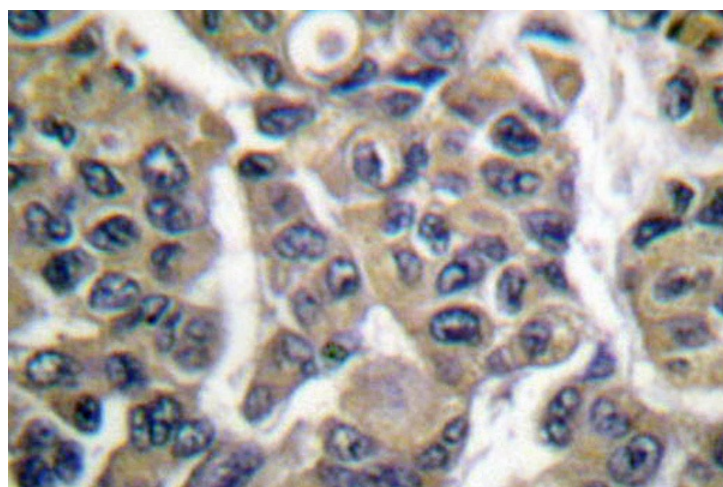
The melanoma-associated antigen (MAGE) family consists of a number of antigens recognized by cytotoxic T lymphocytes. The MAGE genes were initially isolated from different kinds of tumors, and based on their virtually exclusive tumor-specific expression in adult tissues, they have been used as targets for cancer immunotherapy. MAGE genes encode for tumor-rejection antigens and are expressed in tumors of different histologic types, but not in normal tissues, with the exception of testis and placenta. Although a large number of MAGE genes have now been identified and extensively studied in tumors of various origin, their function in normal cells remains unknown.

Synonyms:

MAGE 1, MAGE1, Melanoma-associated antigen 1, MAGEA1, MAGE1A

Product images:


Western blot (WB) analysis with MAGE-N antibody in extracts from HepG2 cells.



Immunohistochemistry (IHC) analyzes with MAGE-N antibody in paraffin-embedded human breast carcinoma tissue.