

Product datasheet for **AP06210PU-M**

LIM Kinase 1 (LIMK1) (+ LIMK2) Rabbit Polyclonal Antibody

Product data:

Product Type:	Primary Antibodies
Applications:	IHC, WB
Recommended Dilution:	Western blot: 1/500-1/1000. Immunohistochemistry on paraffin sections 1/50-1/200.
Reactivity:	Human, Mouse, Rat
Host:	Rabbit
Clonality:	Polyclonal
Immunogen:	Synthetic peptide, corresponding to amino acids 380-420 of Human LIMK1.
Specificity:	This antibody detects endogenous levels of LIMK1/2 protein. (region surrounding Asp402)
Formulation:	Phosphate buffered saline (PBS), pH 7.2. State: Aff - Purified State: Liquid purified Ig fraction Preservative: 0.05% sodium azide
Concentration:	1.0 mg/ml
Purification:	The antibody was affinity-purified from rabbit antiserum by affinity-chromatography using epitope-specific immunogen and the purity is > 95% (by SDS-PAGE)
Conjugation:	Unconjugated
Storage:	Store undiluted at 2-8°C for one month or (in aliquots) at -20°C for longer. Avoid repeated freezing and thawing.
Stability:	Shelf life: one year from despatch.
Predicted Protein Size:	~ 72 kDa
Gene Name:	LIM domain kinase 1
Database Link:	Entrez Gene 16885 Mouse Entrez Gene 65172 Rat Entrez Gene 3984 Human P53667



[View online »](#)

Background:

Proteins containing LIM motifs are typically involved in cell fate determination and growth control. A family of proteins designated LIM kinases, including LIMK-1 and LIMK-2, has been identified. LIMK-1 has been shown to regulate the stabilization of F-Actin structures and cofilin activity, indicating that LIMK-1 plays a role in a signaling pathway involved in the regulation of cell motility and morphogenesis. LIMK-1 inhibits neuronal differentiation of PC12 cells, and is thought to act by interfering with events downstream of MAPK activation. Expression patterns of LIMK-1 and LIMK-2 suggest that these proteins may have different functions during development. A truncated form of LIMK-2 has been identified in adult testis that is thought to arise from an alternative initiation exon.

Synonyms:

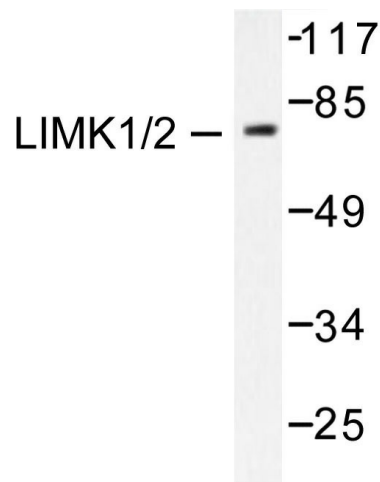
LIMK, LIM domain kinase 1, LIMK-1, EC=2.7.11.1

Protein Families:

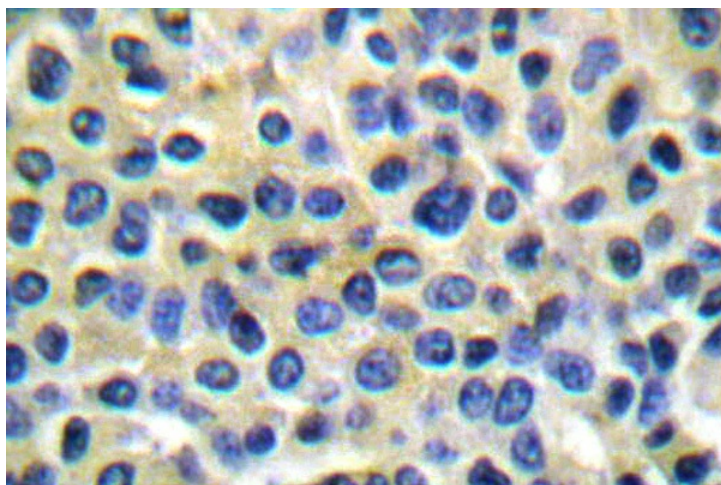
Druggable Genome, Protein Kinase

Protein Pathways:

Axon guidance, Fc gamma R-mediated phagocytosis, Regulation of actin cytoskeleton

Product images:


Western blot (WB) analysis of LIMK1/2 antibody in extracts from COS7 cells.



Immunohistochemistry (IHC) analyzes of LIMK1/2 antibody in paraffin-embedded human breast carcinoma tissue.