

## Product datasheet for **AP06206PU-M**

### Cytokeratin 8 (KRT8) Rabbit Polyclonal Antibody

#### Product data:

|                         |   |
|-------------------------|---|
| Product Type:           | Primary Antibodies  |
| Applications:           | IHC, WB   |
| Recommended Dilution:   | <b>Western blot:</b> 1/500-1/1000.<br><b>Immunofluorescence:</b> 1/50-1/200.<br><b>Immunohistochemistry on paraffin sections:</b> 1/50-1/200.                       |
| Reactivity:             | Human, Mouse  |
| Host:                   | Rabbit  |
| Clonality:              | Polyclonal  |
| Immunogen:              | Synthetic peptide, corresponding to amino acids 41-90 of Human Cytokeratin 8.   |
| Specificity:            | This antibody detects endogenous levels of Keratin 8 protein.<br>(region surrounding Val67)   |
| Formulation:            | Phosphate buffered saline (PBS), pH~7.2<br>State: Aff - Purified<br>State: Liquid purified Ig fraction (> 95% pure by SDS-PAGE)<br>Preservative: 0.05% Sodium Azide |
| Concentration:          | 1.0 mg/ml   |
| Purification:           | Affinity Chromatography using epitope-specific immunogen  |
| Conjugation:            | Unconjugated  |
| Storage:                | Store undiluted at 2-8°C for one month or (in aliquots) at -20°C for longer.<br>Avoid repeated freezing and thawing.  |
| Stability:              | Shelf life: One year from despatch.   |
| Predicted Protein Size: | ~ 55 kDa  |
| Gene Name:              | keratin 8   |
| Database Link:          | <a href="#">Entrez Gene 3856 Human P05787</a>   |



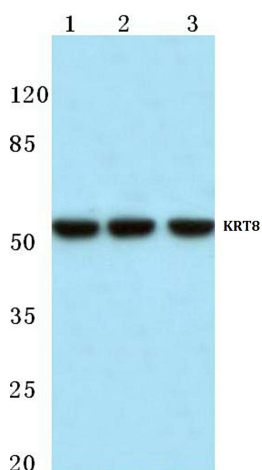
[View online »](#)

**Background:**

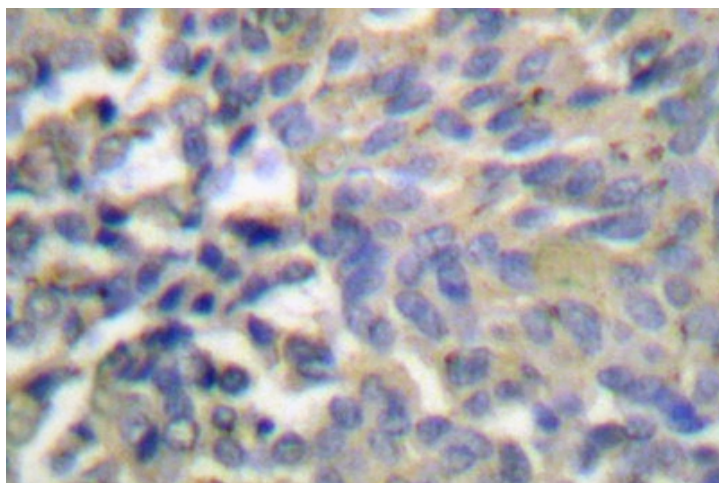
Cytokeratin 8 belongs to the type B (basic) subfamily of high molecular weight keratins and exists in combination with cytokeratin 18. Cytokeratin 8 is primarily found in the non squamous epithelia and is present in majority of adenocarcinomas and ductal carcinomas. It is absent in squamous cell carcinomas. Hepatocellular carcinomas are defined by the use of antibodies that recognize only cytokeratin polypeptides 8 and 18.

**Synonyms:**

KRT8, CYK8, Cytokeratin-8, CK8, Keratin-8, K8, Cytokeratin endo A

**Product images:**


Western blot (WB) analysis of Cytokeratin 8 antibody at 1/500 dilution Lane 1: DLD whole cell lysate Lane 2: Mouse muscle tissue lysate Lane 3: Rat muscle tissue lysate



Immunohistochemistry (IHC) analysis of Keratin 8 antibody in paraffin-embedded human breast carcinoma tissue