

## Product datasheet for **AP06204PU-M**

### Cytokeratin 7 (KRT7) Rabbit Polyclonal Antibody

#### Product data:

Product Type:	Primary Antibodies
Applications:	IF, IHC, WB
Recommended Dilution:	<b>Western blot:</b> 1/500-1/1000. <b>Immunofluorescence:</b> 1/50-1/200. <b>Immunohistochemistry on Paraffin Sections:</b> 1/50-1/200.
Reactivity:	Human, Mouse, Rat
Host:	Rabbit
Clonality:	Polyclonal
Immunogen:	Synthetic peptide, corresponding to amino acids 411-460 of Human Cytokeratin 7.
Specificity:	This antibody detects endogenous levels of Keratin 7 protein. (region surrounding Leu451)
Formulation:	Phosphate buffered saline (PBS), pH~7.2 State: Aff - Purified State: Liquid purified Ig fraction (> 95% pure by SDS-PAGE) Preservative: 0.05% Sodium Azide
Concentration:	1.0 mg/ml
Purification:	Affinity Chromatography using epitope-specific immunogen
Conjugation:	Unconjugated
Storage:	Store undiluted at 2-8°C for one month or (in aliquots) at -20°C for longer. Avoid repeated freezing and thawing.
Stability:	Shelf life: one year from despatch.
Predicted Protein Size:	~51 kDa
Gene Name:	keratin 7
Database Link:	<a href="#">Entrez Gene 3855 Human</a> <a href="#">P08729</a>



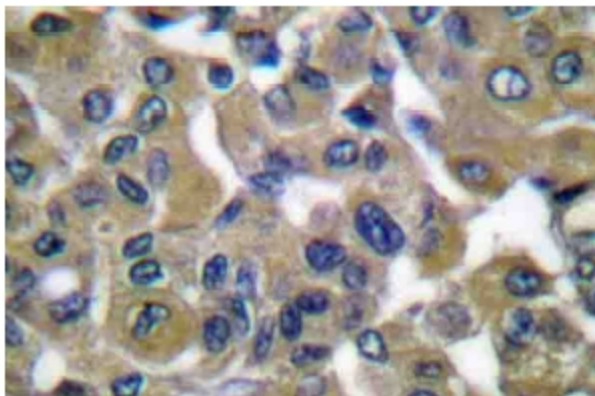
[View online »](#)

**Background:**

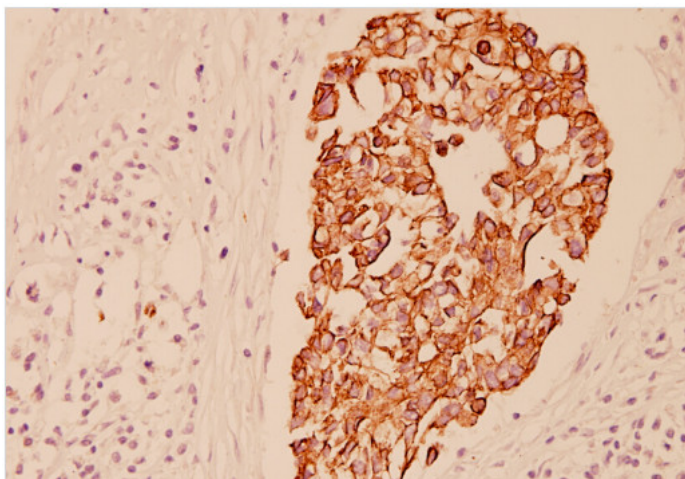
Cytokeratins are useful markers of tissue differentiation and, in addition, they aid in the characterization of malignant tumors. Cytokeratin 7 (also known as sarcolectin) agglutinates normal and transformed cells with a high affinity for simple sugars. Cytokeratin 7 also inhibits the synthesis of interferon-dependent secondary proteins thus reversing the antiviral effect of interferon induction and restoring cells to their status ad primum. In normal and transformed cells, Cytokeratin 7 localizes to the membrane.

**Synonyms:**

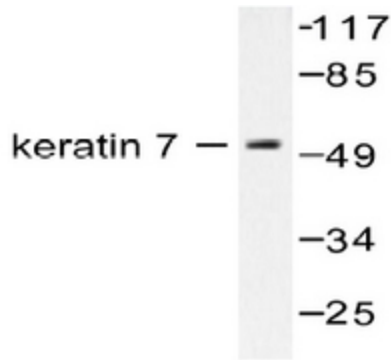
KRT7, KRT-7, SCL, CK-7, CK7, Keratin-7, K7, K-7, Sarcolectin

**Product images:**


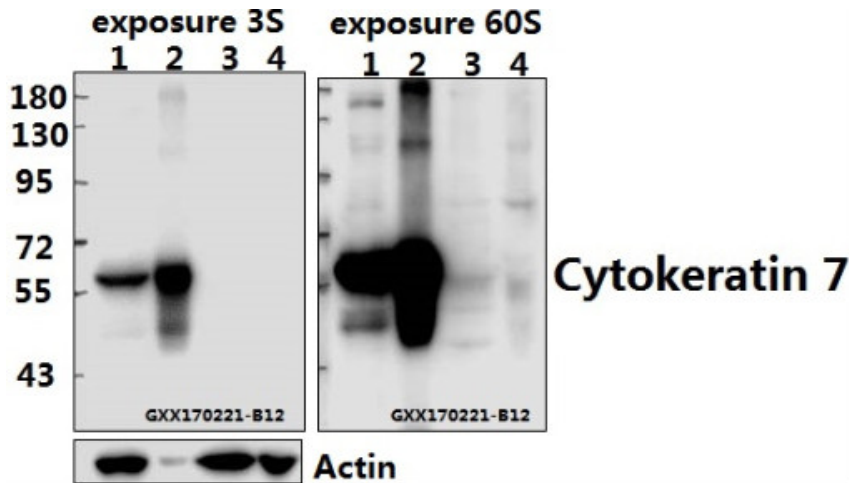
**Immunohistochemistry** analysis of Cytokeratin 7 antibody (Cat.-No [AP06204PU-N]) in paraffin-embedded human breast carcinoma tissue.



**Immunohistochemistry** analysis of Cytokeratin 7 antibody (Cat.-No [AP06204PU-N]) in paraffin-embedded human breast carcinoma tissue at 1/100.

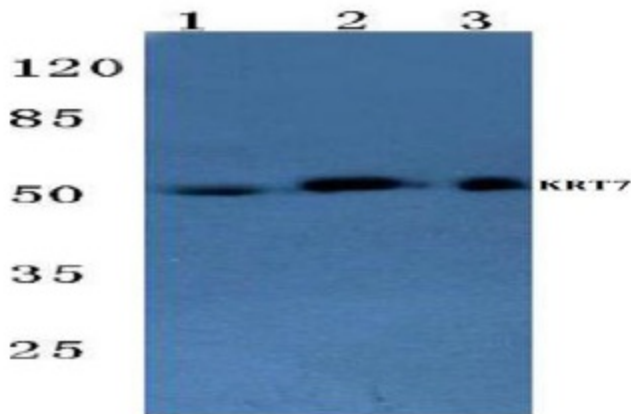


Western blot analysis of Cytokeratin 7 antibody Cat.-No [AP06204PU-N] in extracts from HepG2 cells.



**Western blot (WB)** analysis of Cytokeratin 7 antibody (Cat.-No [AP06204PU-N]) at 1/500 dilution.

Lane 1: SGC7901 whole cell lysate(40ug).  
Lane 2: A431 whole cell lysate(10ug).  
Lane 3: PC12 whole cell lysate(40ug).  
Lane 4: SP2/0 whole cell lysate(40ug).



**Western blot** analysis of Cytokeratin 7 antibody (Cat.-No [AP06204PU-N]) at 1/500 dilution in HeLa (Lane 1), sp2/0 (Lane 2) and H9C2 (Lane 3) whole cell lysates.