

Product datasheet for **AP06202PU-N**

Cytokeratin 20 (KRT20) Rabbit Polyclonal Antibody

Product data:

Product Type:	Primary Antibodies
Applications:	IF, IHC, WB
Recommended Dilution:	Western blot: 1/500-1/1000. Immunofluorescence: 1/50-1/200. Immunohistochemistry on Paraffin Sections: 1/50-1/200.
Reactivity:	Human, Mouse, Rat
Host:	Rabbit
Clonality:	Polyclonal
Immunogen:	Synthetic peptide, corresponding to amino acids C-terminus of Human Cytokeratin 20.
Specificity:	This antibody detects endogenous levels of Cytokeratin 20 protein. (region surrounding Asp409)
Formulation:	Phosphate buffered saline (PBS), pH~7.2 State: Aff - Purified State: Liquid purified Ig fraction (> 95% pure by SDS-PAGE). Preservative: 0.05% Sodium Azide
Concentration:	1.0 mg/ml
Purification:	Affinity Chromatography using epitope-specific immunogen.
Conjugation:	Unconjugated
Storage:	Store undiluted at 2-8°C for one month or (in aliquots) at -20°C for longer. Avoid repeated freezing and thawing.
Stability:	Shelf life: One year from despatch.
Predicted Protein Size:	~48 kDa
Gene Name:	keratin 20
Database Link:	Entrez Gene 54474 Human P35900



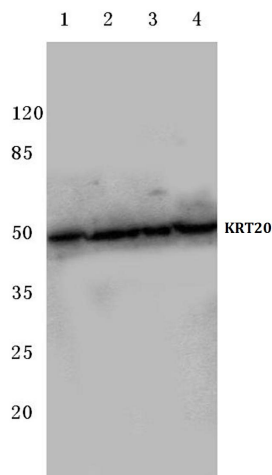
[View online »](#)

Background:

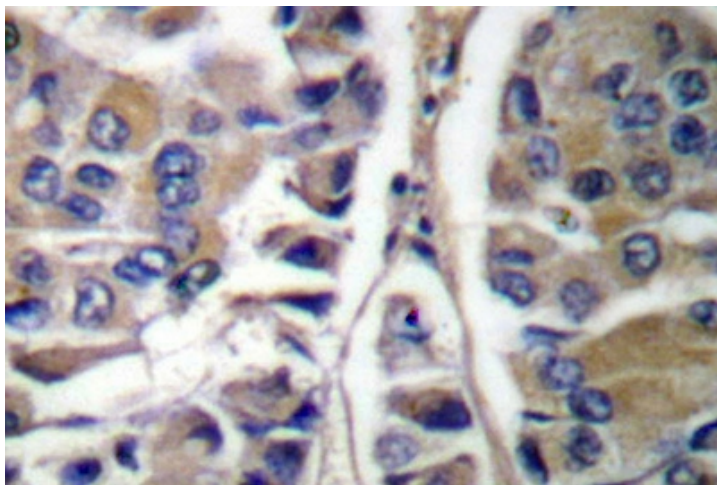
Cytokeratins play a critical role in differentiation and tissue specialization and function to maintain the overall structural integrity of epi-thelial cells. The α -helical coiled-coil dimers associate laterally end-to-end to form 10 nm diameter filaments. Cytokeratins are useful markers of tissue differentiation, and in addition, they aid in the characterization of malignant tumors. Cytokeratin 20 is abundantly expressed in goblet cells and enterocytes of the gastrointestinal tract, and Cytokeratin 20 is a useful marker of pancreatic and colorectal cancer. Cytokeratin 20 is also helpful in distinguishing different types of highly related carcinomas, such as renal oncocytomas from renal cell carcinomas.

Synonyms:

Cytokeratin 20, Keratin-20, KRT20, CK20, K20, Protein IT

Product images:

Western blot (WB) analysis of Cytokeratin 20 antibody at 1/500 dilution Lane 1: A549 whole cell lysate Lane 2: SP2/0 whole cell lysate Lane 3: Rat kidney tissue lysate Lane 4: Mouse kidney tissue lysate



Immunohistochemistry (IHC) analyzes of Keratin 20 antibody in paraffin-embedded human breast carcinoma tissue.