

Product datasheet for **AP06201PU-N**

Cytokeratin 19 (KRT19) Rabbit Polyclonal Antibody

Product data:

Product Type:	Primary Antibodies
Applications:	IF, IHC, WB
Recommended Dilution:	Western blot: 1/500-1/1000. Immunofluorescence: 1/50-1/200. Immunohistochemistry on Paraffin Sections: 1/50-1/200.
Reactivity:	Human, Mouse, Rat
Host:	Rabbit
Clonality:	Polyclonal
Immunogen:	Synthetic peptide, corresponding to amino acids 221-270 of Human Cytokeratin 19.
Specificity:	This antibody detects endogenous levels of Cytokeratin 19 protein. (region surrounding Met259)
Formulation:	Phosphate buffered saline (PBS), pH~7.2 State: Aff - Purified State: Liquid purified Ig fraction (> 95% pure by SDS-PAGE) Preservative: 0.05% Sodium Azide
Concentration:	1.0 mg/ml
Purification:	Affinity Chromatography using epitope-specific immunogen
Conjugation:	Unconjugated
Storage:	Store undiluted at 2-8°C for one month or (in aliquots) at -20°C for longer. Avoid repeated freezing and thawing.
Stability:	Shelf life: one year from despatch.
Predicted Protein Size:	~44 kDa
Gene Name:	keratin 19
Database Link:	Entrez Gene 3880 Human P08727



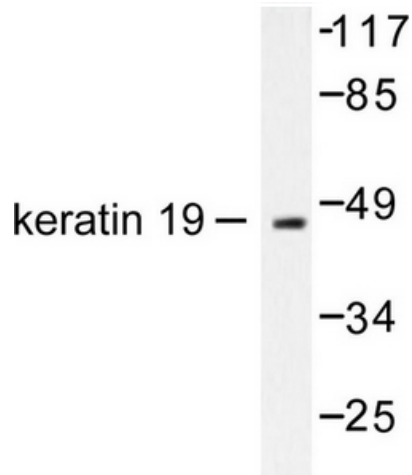
[View online »](#)

Background:

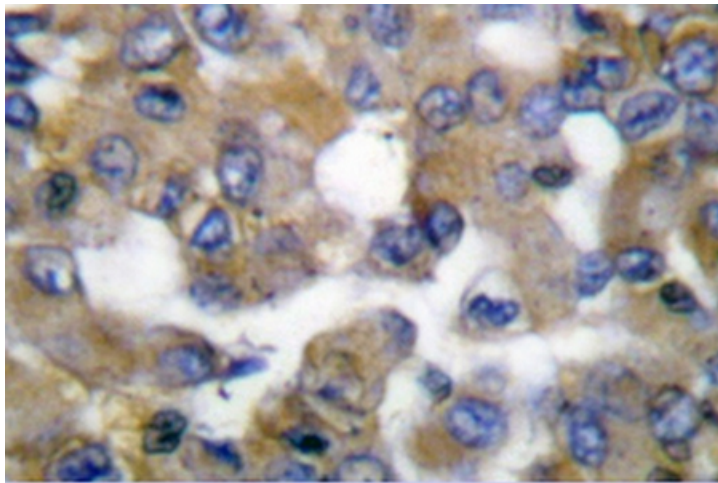
Keratins (cytokeratins) are intermediate filament proteins that are mainly expressed in epithelial cells. Keratins assemble into filaments, forming heterodimers of an acidic keratin (or type I keratin, keratins 9 to 23) and a basic keratin (or type II keratin, keratins 1 to 8) (1,2). Keratin isoforms demonstrate tissue- and differentiation-specific profiles, which make them useful as biomarkers (1). Mutations in keratin genes are associated with skin disorders, liver and pancreatic diseases, and inflammatory intestinal diseases (3-6).

Synonyms:

Cytokeratin-19, Keratin-19, KRT19, CK19, K19

Product images:


Western blot analysis of Cytokeratin-19 Antibody in extracts from LOVO cells.



Immunohistochemistry analysis of Cytokeratin-19 Antibody in paraffin-embedded human breast carcinoma tissue.