

Product datasheet for **AP06200PU-M**

Cytokeratin 18 (KRT18) Rabbit Polyclonal Antibody

Product data:

Product Type:	Primary Antibodies
Applications:	ELISA, IHC, IP, WB
Recommended Dilution:	Western blot: 1/500-1/1000. Immunoprecipitation: 1/50-1/200. Immunofluorescence: 1/50-1/200. Immunohistochemistry on Paraffin Sections: 1/50-1/200.
Reactivity:	Human
Host:	Rabbit
Clonality:	Polyclonal
Immunogen:	Synthetic peptide, corresponding to amino acids 1-50 of Human Cytokeratin 18.
Specificity:	This antibody detects endogenous levels of Keratin 18 protein. (region surrounding Pro27)
Formulation:	Phosphate buffered saline (PBS), pH~7.2 State: Aff - Purified State: Liquid purified Ig fraction (> 95% pure by SDS-PAGE) Preservative: 0.05% Sodium Azide
Concentration:	1.0 mg/ml
Purification:	Affinity Chromatography using epitope-specific immunogen
Conjugation:	Unconjugated
Storage:	Store undiluted at 2-8°C for one month or (in aliquots) at -20°C for longer. Avoid repeated freezing and thawing.
Stability:	Shelf life: one year from despatch.
Predicted Protein Size:	~46 kDa
Gene Name:	keratin 18
Database Link:	Entrez Gene 3875 Human P05783



[View online »](#)

Background:

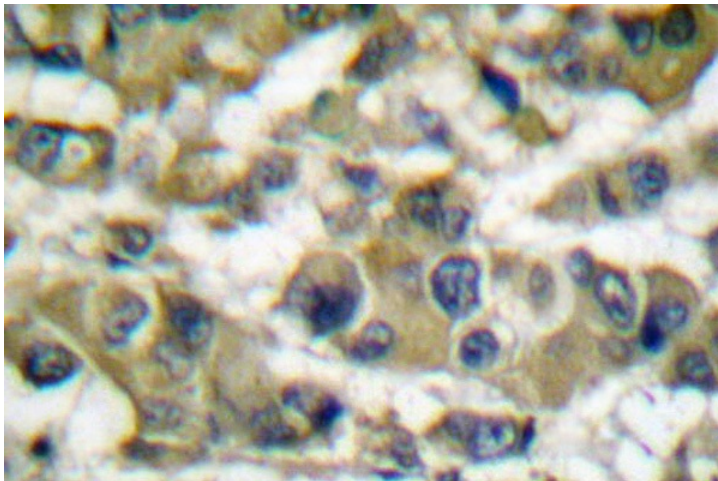
Cytokeratin 18 encodes the type I intermediate filament chain keratin 18. Keratin 18, together with its filament partner keratin 8, are perhaps the most commonly found members of the intermediate filament gene family. They are expressed in single layer epithelial tissues of the body. Mutations in this gene have been linked to cryptogenic cirrhosis. Two transcript variants encoding the same protein have been found for this gene. Involved in the uptake of thrombin-antithrombin complexes by hepatic cells By similarity. When phosphorylated, plays a role in filament reorganization. Involved in the delivery of mutated CFTR to the plasma membrane. Together with KRT8, is involved in interleukin-6 (IL-6)-mediated barrier protection.

Synonyms:

Cytokeratin-18, CK18, Keratin-18, Keratin 18, KRT18, CYK18, K18

Product images:


Western blot (WB) analysis of Keratin 18 antibody in extracts from HeLa cell treated with UV 5'.



Immunohistochemistry (IHC) analyzes of Keratin 18 antibody in paraffin-embedded human breast carcinoma tissue.