

Product datasheet for **AP06199PU-S**

Cytokeratin 18 (KRT18) Rabbit Polyclonal Antibody

Product data:

Product Type:	Primary Antibodies
Applications:	IF, IHC, WB
Recommended Dilution:	Western blot: 1/500-1/1000. Immunofluorescence: 1/50-1/200. Immunohistochemistry on Paraffin Sections: 1/50-1/200.
Reactivity:	Human, Mouse, Rat
Host:	Rabbit
Clonality:	Polyclonal
Immunogen:	Synthetic peptide, corresponding to amino acids 381-430 of Human Cytokeratin 18.
Specificity:	This antibody detects endogenous levels of Keratin 18 protein. (region surrounding Thr410)
Formulation:	Phosphate buffered saline (PBS), pH~7.2 State: Aff - Purified State: Liquid purified Ig fraction (> 95% pure by SDS-PAGE). Preservative: 0.05% Sodium Azide
Concentration:	1.0 mg/ml
Purification:	Affinity Chromatography using epitope-specific immunogen.
Conjugation:	Unconjugated
Storage:	Store undiluted at 2-8°C for one month or (in aliquots) at -20°C for longer. Avoid repeated freezing and thawing.
Stability:	Shelf life: one year from despatch.
Predicted Protein Size:	~ 46 kDa
Gene Name:	keratin 18
Database Link:	Entrez Gene 3875 Human P05783



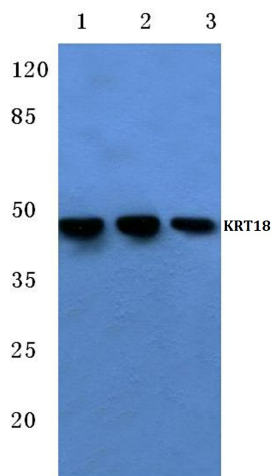
[View online »](#)

Background:

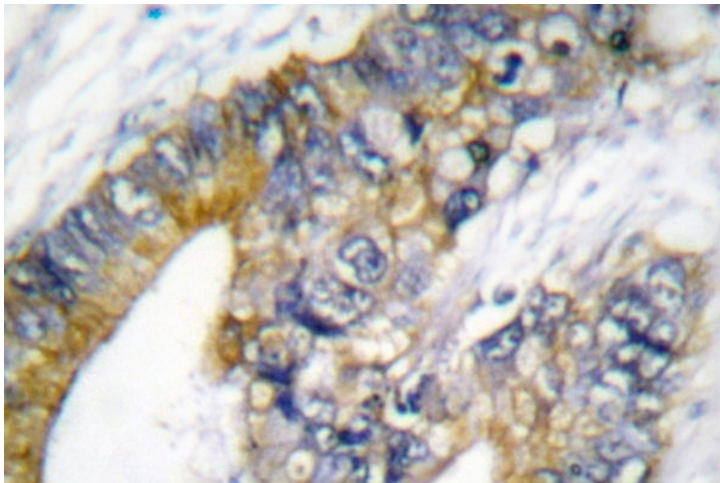
Cytokeratins comprise a diverse group of intermediate filament proteins (IFPs) that are expressed as pairs in both keratinized and non-keratinized epithelial tissue. Cytokeratins play a critical role in differentiation and tissue specialization and function to maintain the overall structural integrity of epithelial cells. Cytokeratins have been found to be useful markers of tissue differentiation which is directly applicable to the characterization of malignant tumors. For example, Cytokeratins 10 and 13 are expressed highly in a subset of squamous cell carcinomas while Cytokeratin 18 is expressed in a majority of adenocarcinomas and basal cell carcinomas. Cytokeratin 18 contains two major phosphorylation sites on Ser 33 and Ser 52. Phosphorylation of Ser 18 is essential for the association of cytokeratin 18 with 14-3-3 proteins and is involved in keratin organization and distribution.

Synonyms:

Cytokeratin-18, CK18, Keratin-18, Keratin 18, KRT18, CYK18, K18

Product images:

Western blot (WB) analysis of Cytokeratin 18 antibody at 1/500 dilution Lane 1: MCF-7 whole cell lysate Lane 2: Mouse liver tissue lysate Lane 3: Rat liver tissue lysate



Immunohistochemistry (IHC) analysis of Cytokeratin 18 antibody in paraffin-embedded human lung carcinoma tissue.