

## Product datasheet for **AP06197PU-M**

### Cytokeratin 16 (KRT16) Rabbit Polyclonal Antibody

#### Product data:

Product Type:	Primary Antibodies
Applications:	IHC, WB
Recommended Dilution:	<b>Western blot:</b> 1/500-1/1000. <b>Immunohistochemistry on Paraffin Sections:</b> 1/50-1/200.
Reactivity:	Human, Mouse, Rat
Host:	Rabbit
Clonality:	Polyclonal
Immunogen:	Synthetic peptide, corresponding to amino acids 421-470 of Human Cytokeratin 16.
Specificity:	This antibody detects endogenous levels of Cytokeratin 16 protein. (region surroundign Ser451)
Formulation:	Phosphate buffered saline (PBS), pH 7.2 State: Aff - Purified State: Liquid purified Ig fraction (> 95% pure by SDS-PAGE) Stabilizer: 50 % Glycerol Preservative: 0.02% Sodium Azide
Concentration:	1.0 mg/ml
Purification:	Affinity Chromatography using epitope-specific immunogen
Conjugation:	Unconjugated
Storage:	Store undiluted at 2-8°C for one month or (in aliquots) at -20°C for longer. Avoid repeated freezing and thawing.
Stability:	Shelf life: One year from despatch.
Predicted Protein Size:	~52 kDa
Gene Name:	keratin 16
Database Link:	<a href="#">Entrez Gene 3868 Human P08779</a>



[View online »](#)

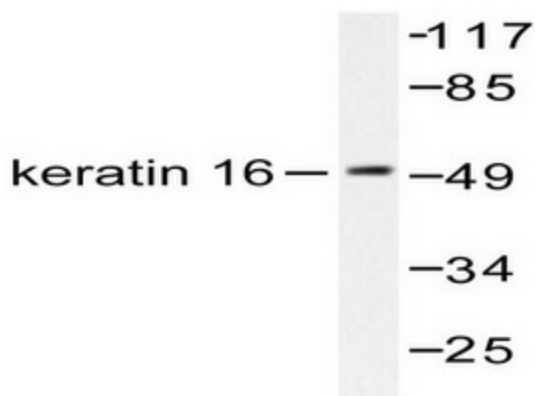
**Background:**

Keratin 16 is expressed in keratinocytes, which are undergoing rapid turnover in the suprabasal region (also known as hyperproliferation-related keratins). Keratin 16 is absent in normal breast tissue and in noninvasive breast carcinomas. Only 10% of the invasive breast carcinomas show diffuse or focal positivity. Reportedly, a relatively high concordance was found between the carcinomas immunostaining with the basal cell and the hyperproliferation-related keratins, but not between these markers and the proliferation marker Ki-67. This supports the conclusion that basal cells in breast cancer may show extensive proliferation, and that absence of Ki-67 staining does not mean that (tumor) cells are not proliferating.

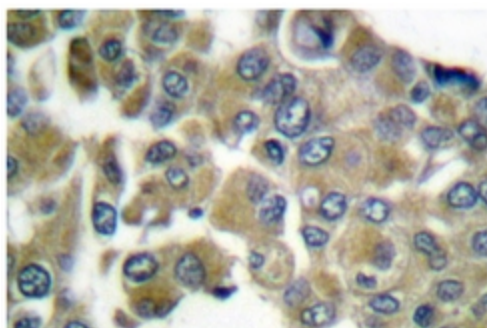
Two cytokeratins, 6 and 16, are expressed when keratinocytes are undergoing rapid turnover in various pathological states, wound healing, psoriasis and some carcinomas

**Synonyms:**

Cytokeratin-16, Keratin-16, Keratin 16, KRT16, KRT16A, CK16, K16

**Product images:**


Western blot analysis in extracts from HepG2 cells using Cytokeratin 16 antibody.



Immunohistochemistry analysis in paraffin-embedded human breast carcinoma tissue using Cytokeratin 16 antibody.