

## Product datasheet for **AP06196PU-M**

### Cytokeratin 15 (KRT15) Rabbit Polyclonal Antibody

#### Product data:

Product Type:	Primary Antibodies
Applications:	IHC, WB
Recommended Dilution:	<b>Western blot:</b> 1/500-1/1000. <b>Immunohistochemistry on Paraffin Sections:</b> 1/50-1/200.
Reactivity:	Human, Mouse, Rat
Host:	Rabbit
Clonality:	Polyclonal
Immunogen:	Synthetic peptide, corresponding to the N-terminus of Human Cytokeratin 15.
Specificity:	This antibody detects endogenous levels of Keratin 15 protein. (region surrounding Thr12)
Formulation:	Phosphate buffered saline (PBS), pH~7.2 State: Aff - Purified State: Liquid purified Ig fraction (> 95% pure by SDS-PAGE). Preservative: 0.05% Sodium Azide
Concentration:	1.0 mg/ml
Purification:	Affinity Chromatography using epitope-specific immunogen.
Conjugation:	Unconjugated
Storage:	Store undiluted at 2-8°C for one month or (in aliquots) at -20°C for longer. Avoid repeated freezing and thawing.
Stability:	Shelf life: one year from despatch.
Predicted Protein Size:	~ 49 kDa
Gene Name:	keratin 15
Database Link:	<a href="#">Entrez Gene 3866 Human P19012</a>

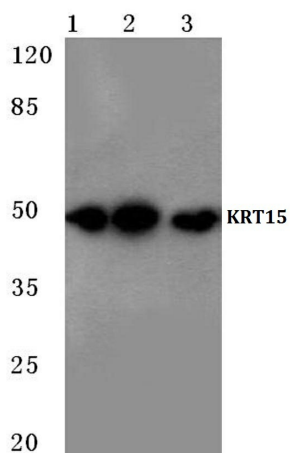
[View online »](#)

**Background:**

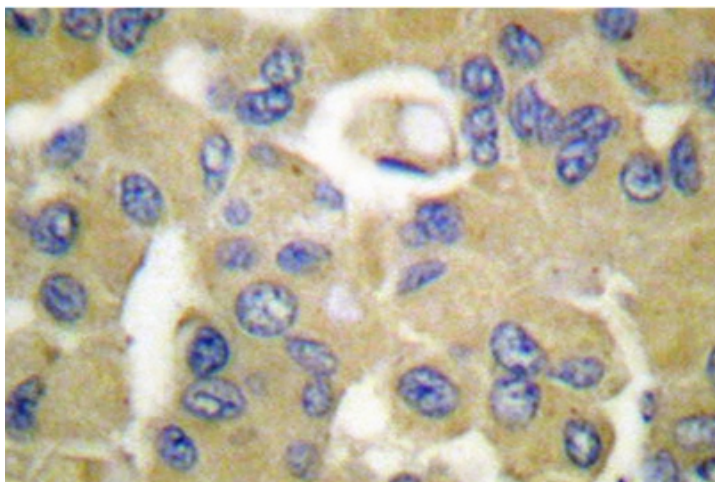
Cytokeratin 15 (CK15, K15, K1CO, keratin15, type I cytoskeletal 15) is an intermediate filament (IF) type I protein that is responsible for the mechanical integrity of epithelial cells. Keratin family members are subdivided into cytokeratins and hair keratins. Most of the type I cytokeratins consist of acidic proteins which are arranged in pairs of heterotypic keratin chains, and are clustered in a region on chromosome 17q21.2. Cytokeratin 15 is a specific marker of stem cells of the hair-follicle bulge and may be a useful marker for diagnosis between basal cell carcinoma and trichoepithelioma. Trichoblastoma are benign neoplasms of follicular differentiation frequently found in nevus sebaceus. Many morphologic features are shared with nodular basal cell carcinoma, sometimes rendering a diagnosis difficult. Trichoblastoma and BCC show variable expression of Cytokeratin 15 and Cytokeratin 19, and absence of hair keratins.

**Synonyms:**

Cytokeratin-15, CK-15, K15, Keratin-15, Keratin 15, KRTB, KRT15

**Product images:**


Western blot (WB) analysis of Cytokeratin 15 antibody at 1/500 dilution: Lane 1: HepG2 whole cell lysate Lane 2: Mouse testis tissue lysate Lane 3: Rat testis tissue lysate



Immunohistochemistry (IHC) analyzes of Keratin 15 antibody in paraffin-embedded human breast carcinoma tissue.