

Product datasheet for **AP06194PU-N**

Cytokeratin 10 (KRT10) Rabbit Polyclonal Antibody

Product data:

Product Type:	Primary Antibodies
Applications:	IF, IHC, WB
Recommended Dilution:	Western blot: 1/500-1/1000. Immunofluorescence: 1/50-1/200. Immunohistochemistry on paraffin sections: 1/50-1/200.
Reactivity:	Human, Mouse, Rat
Host:	Rabbit
Clonality:	Polyclonal
Immunogen:	Synthetic peptide, corresponding to amino acids 130-180 of Human Cytokeratin 10.
Specificity:	This antibody detects endogenous levels of Cytokeratin 10 protein. (region surrounding Tyr160)
Formulation:	Phosphate buffered saline (PBS), pH 7.2. State: Aff - Purified State: Liquid purified Ig fraction Preservative: 0.05% sodium azide
Concentration:	1.0 mg/ml
Purification:	Affinity-chromatography using epitope-specific immunogen and the purity is > 95% (by SDS-PAGE)
Conjugation:	Unconjugated
Storage:	Store undiluted at 2-8°C for one month or (in aliquots) at -20°C for longer. Avoid repeated freezing and thawing.
Stability:	Shelf life: one year from despatch.
Predicted Protein Size:	~ 59 kDa
Gene Name:	keratin 10
Database Link:	Entrez Gene 3858 Human P13645



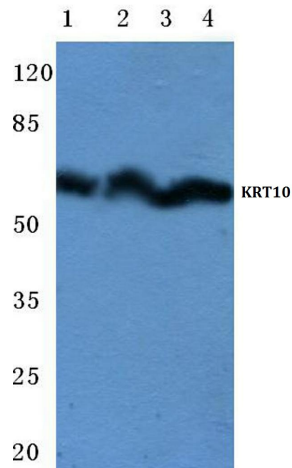
[View online »](#)

Background:

Cytokeratins comprise a diverse group of intermediate filament proteins (IFPs) that are expressed as pairs in both keratinized and non-keratinized epithelial tissue. Cytokeratins play a critical role in differentiation and tissue specialization and function to maintain the overall structural integrity of epithelial cells. Cytokeratins have been found to be useful markers of tissue differentiation which is directly applicable to the characterization of malignant tumors. Cytokeratins 10 and 13 are present in the cytoskeletal region of a subset of squamous cell carcinomas. Cytokeratin 10 is a heterotetramer of two type I and two type II keratins, is generally associated with keratin 1, and is seen in all suprabasal cell layers including stratum corneum.

Synonyms:

Cytokeratin-10, CK10, CK-10, Keratin-10, KRT10, KPP, K10

Product images:

Western blot (WB) analysis of Cytokeratin 10 antibody at 1/500 dilution: Lane 1: HeLa whole cell lysate Lane 2: Raw264.7 whole cell lysate Lane 3: NIH-3T3 whole cell lysate Lane 4: Rat brain tissue lysate