

Product datasheet for **AP06191PU-N**

JUNB Rabbit Polyclonal Antibody

Product data:

Product Type:	Primary Antibodies
Applications:	ELISA, IHC, IP, WB
Recommended Dilution:	Immunoprecipitation: 1/50-1/200. Western blot: 1/500-1/1000. Immunohistochemistry on Paraffin Sections: 1/50-1/200.
Reactivity:	Human, Mouse
Host:	Rabbit
Clonality:	Polyclonal
Immunogen:	Synthetic peptide, corresponding to amino acids 220-270 of Human JunB.
Specificity:	This antibody detects endogenous levels of JunB protein. (region surrounding Asp253)
Formulation:	Phosphate buffered saline (PBS), pH~7.2 State: Aff - Purified State: Liquid purified Ig fraction (> 95% pure by SDS-PAGE) Preservative: 0.05% Sodium Azide
Concentration:	1.0 mg/ml
Purification:	Affinity Chromatography using epitope-specific immunogen
Conjugation:	Unconjugated
Storage:	Store undiluted at 2-8°C for one month or (in aliquots) at -20°C for longer. Avoid repeated freezing and thawing.
Stability:	Shelf life: one year from despatch.
Predicted Protein Size:	~43 kDa
Gene Name:	JunB proto-oncogene, AP-1 transcription factor subunit
Database Link:	Entrez Gene 3726 Human P17275



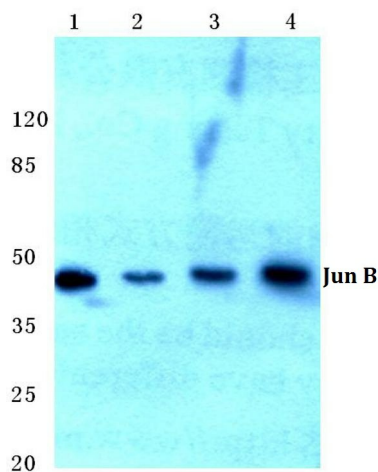
[View online »](#)

Background:

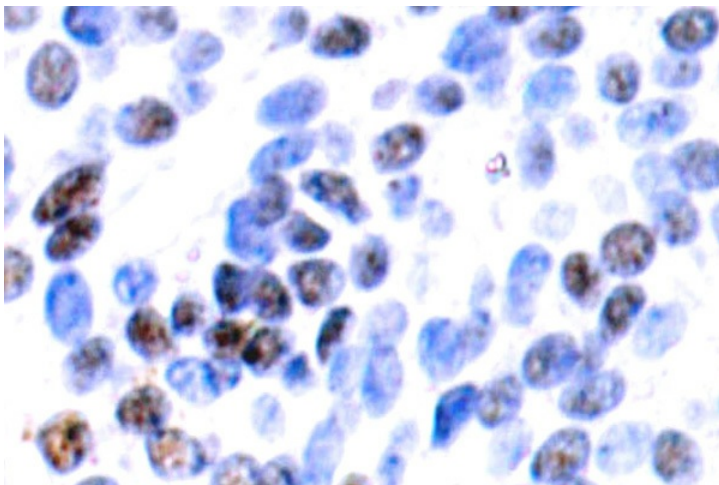
The c-Jun proto-oncogene was first identified as the cellular homolog of the avian sarcoma virus v-Jun oncogene. The c-Jun protein along with c-Fos is a component of the AP-1 transcriptional complex. c-Jun can form either Jun/Jun homodimers or Jun/Fos heterodimers via the leucine repeats in both proteins. Homo- and heterodimers bind to the TGACTCA consensus sequence present in numerous promoters and initially identified as the phorbol ester tumor promoter response element (TRE). Two additional genes, Jun B and Jun D have been shown to be almost identical to c-Jun in their C-terminal regions, which are involved in dimerization and DNA binding, whereas their N-terminal domains, which are involved in transcriptional activation, diverge. All three form heterodimers among themselves and with c-Fos and other members of the Fos gene family.

Synonyms:

JUNB

Product images:

Western blot (WB) analysis of JunB antibody at 1/500 dilution Lane 1:Hela cell lysate Lane 2:MCF-7 cell lysate Lane 3:NIH-3T3 cell lysate Lane 4:PC12 cell lysate



Immunohistochemistry analysis of JunB Antibody in paraffin-embedded human breast carcinoma tissue.