

## Product datasheet for **AP06190PU-N**

### JM4 (PRAF2) Rabbit Polyclonal Antibody

#### Product data:

Product Type:	Primary Antibodies
Applications:	IF, IHC, WB
Recommended Dilution:	<b>Western blot:</b> 1/500-1/1000. <b>Immunofluorescence:</b> 1/50-1/200. <b>Immunohistochemistry on Paraffins Sections:</b> 1/50-1/200.
Reactivity:	Human, Mouse, Rat
Host:	Rabbit
Clonality:	Polyclonal
Immunogen:	Synthetic peptide, corresponding to amino acids 141-190 of Human PRAF2.
Specificity:	This antibody detects endogenous levels of JM4/PRAF2 protein. (region surrounding Leu166)
Formulation:	PBS, pH~7.2 State: Aff - Purified State: Liquid purified Ig fraction (> 95% pure by SDS-PAGE) Preservative: 0.05% Sodium Azide
Concentration:	1.0 mg/ml
Purification:	Affinity Chromatography using epitope-specific immunogen
Conjugation:	Unconjugated
Storage:	Store undiluted at 2-8°C for one month or (in aliquots) at -20°C for longer. Avoid repeated freezing and thawing.
Stability:	Shelf life: one year from despatch.
Predicted Protein Size:	~20 kDa
Gene Name:	PRA1 domain family member 2
Database Link:	<a href="#">Entrez Gene 11230 Human O60831</a>



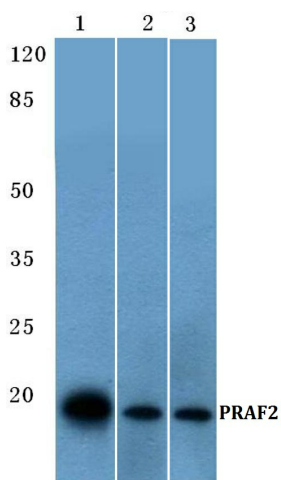
[View online »](#)

**Background:**

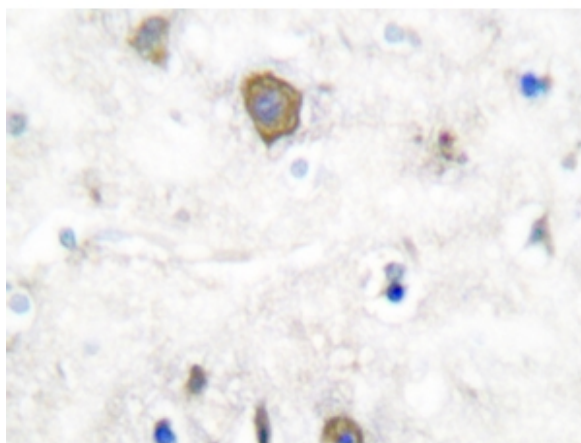
JM4 (Jena-Muenchen 4), also known as PRAF2 (PRA1 domain family, member 2), is a 178 amino acid endosomal multi-pass membrane protein involved in vesicular trafficking and Endoplasmic reticulum/Golgi transport. As a member of the PRA1 family, JM4 contains four putative transmembrane (TM) domains, interacts with the CC chemokine receptor 5 (CCR5) and colocalizes with Calnexin in the ER and mannose 6-phosphate receptor (CD-MPR) in the Golgi apparatus. While ubiquitously expressed, JM4 has been found at high levels in small intestine, lung, pancreas, spleen, Purkinje cells of the cerebellum and in neuronal cells of the hippocampus, cerebral cortex and lateral ventricles of the brain. JM4 plays a proapoptotic role in cerulenin-induced neuroblastoma apoptosis and has been implicated in human cancer.

**Synonyms:**

PRA1 family protein 2

**Product images:**

Western blot (WB) analysis of PRAF2 antibody at 1/500 dilution Lane 1:HEK293T whole cell lysate Lane 2:Rat brain tissue lysate Lane 3:Mouse brain tissue lysate



Immunohistochemistry (IHC) analysis of JM4/PRAF2 antibody in paraffin-embedded human brain tissue.