

## Product datasheet for **AP06186PU-N**

### **I $\kappa$ B epsilon (NFKBIE) Rabbit Polyclonal Antibody**

#### **Product data:**

Product Type:	Primary Antibodies
Applications:	IF, IHC, WB
Recommended Dilution:	<b>Western blot:</b> 1/500-1/1000. <b>Immunohistochemistry on paraffin sections:</b> 1/50-1/200. <b>Immunofluorescence:</b> 1/50-1/200.
Reactivity:	Human, Mouse, Rat
Host:	Rabbit
Clonality:	Polyclonal
Immunogen:	Synthetic peptide, corresponding to amino acids 1-50 of Human I $\kappa$ B- $\epsilon$ .
Specificity:	This antibody detects endogenous levels of I $\kappa$ B-epsilon protein. (region surrounding Asp17)
Formulation:	Phosphate buffered saline (PBS), pH 7.2. State: Aff - Purified State: Liquid purified Ig fraction Preservative: 15 mM sodium azide
Concentration:	1.0 mg/ml
Purification:	The antibody was affinity-purified from rabbit antiserum by affinity-chromatography using epitope-specific immunogen and the purity is > 95% (by SDS-PAGE)
Conjugation:	Unconjugated
Storage:	Store undiluted at 2-8°C for one month or (in aliquots) at -20°C for longer. Avoid repeated freezing and thawing.
Stability:	Shelf life: one year from despatch.
Predicted Protein Size:	~ 45 kDa
Gene Name:	NFKB inhibitor epsilon
Database Link:	<a href="#">Entrez Gene 4794 Human O00221</a>



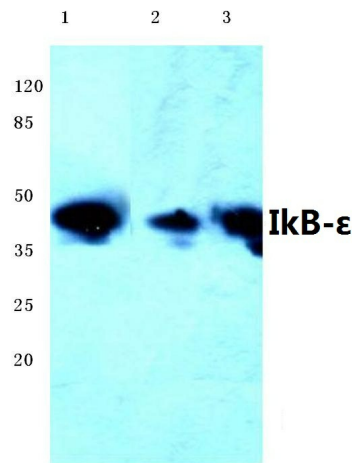
[View online »](#)

**Background:**

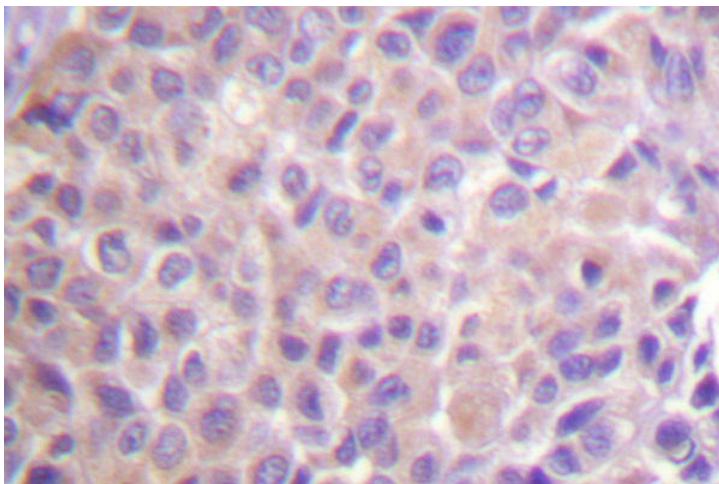
The transcription factor NFkappaB is retained in the cytoplasm in an inactive form by the inhibitory protein IkappaB. Activation of NFkappaB requires that IkappaB be phosphorylated on specific serine residues, which results in targeted degradation of IkappaB. IkappaB kinase alpha (IKKalpha), previously designated CHUK, interacts with IkappaB-alpha and specifically phosphorylates IkappaB-alpha on the sites that trigger its degradation Serines 32 and 36. IKKalpha appears to be critical for NFkappaB activation in response to proinflammatory cytokines. Phosphorylation of IkappaB by IKKalpha is stimulated by the NFkappaB inducing kinase (NIK), which itself is a central regulator for NFkappaB activation in response to TNF and IL-1. The functional IKK complex contains three subunits, IKKalpha, IKKbeta and IKKgamma (also designated NEMO), and each appear to make essential contributions to IkappaB phosphorylation.

**Synonyms:**

I-kappa-B-epsilon, Ikb-E, Ikb-epsilon, IkappaBepsilon

**Product images:**

Western blot (WB) analysis of Ikb-ε antibody at 1/500 dilution. Lane 1: HEK293T whole cell lysate; Lane 2: NIH-3T3 whole cell lysate; Lane 3: PC12 whole cell lysate.



Immunohistochemistry (IHC) analysis of Ikb-ε antibody on paraffin-embedded human breast carcinoma tissue.