

## Product datasheet for **AP06184PU-N**

### Involucrin (IVL) Rabbit Polyclonal Antibody

#### Product data:

|                         |  |
|-------------------------|--|
| Product Type:           | Primary Antibodies   |
| Applications:           | ELISA, IHC, WB   |
| Recommended Dilution:   | <b>Western blot:</b> 1/500-1/1000.<br><b>Immunohistochemistry on paraffin sections</b> 1/50-1/200.   |
| Reactivity:             | Human  |
| Host:                   | Rabbit   |
| Clonality:              | Polyclonal   |
| Immunogen:              | Synthetic peptide, corresponding to amino acids 541-590 of Human Involucrin.   |
| Specificity:            | This antibody detects endogenous levels of Involucrin protein.<br>(region surrounding Pro568)  |
| Formulation:            | Phosphate buffered saline (PBS), pH~7.2<br>State: Aff - Purified<br>State: Liquid purified Ig fraction (> 95% pure by SDS-PAGE).<br>Preservative: 0.05% Sodium Azide |
| Concentration:          | 1.0 mg/ml  |
| Purification:           | Affinity Chromatography using epitope-specific immunogen.  |
| Conjugation:            | Unconjugated   |
| Storage:                | Store undiluted at 2-8°C for one month or (in aliquots) at -20°C for longer.<br>Avoid repeated freezing and thawing.   |
| Stability:              | Shelf life: one year from despatch.  |
| Predicted Protein Size: | ~ 68 kDa   |
| Gene Name:              | involucrin   |
| Database Link:          | <a href="#">Entrez Gene 3713 Human P07476</a>  |



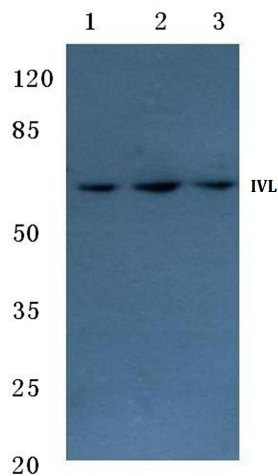
[View online »](#)

**Background:**

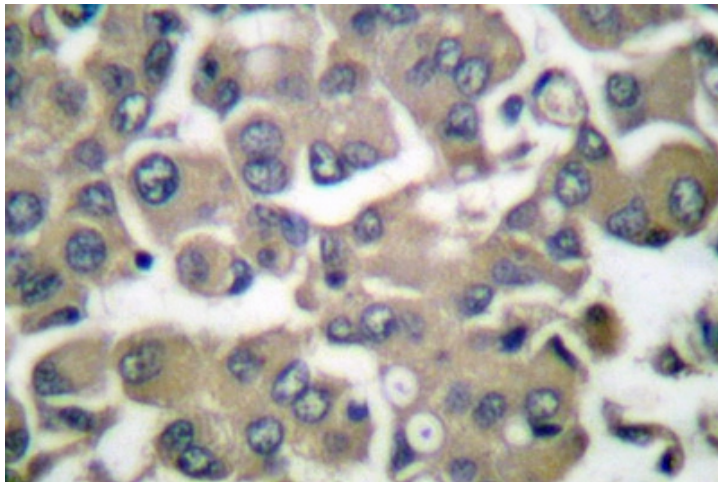
Involucrin is a precursor protein of the keratinocyte cornified envelope, which is formed beneath the inner surface of the cell membrane during terminal differentiation. Involucrin first appears in the cell cytosol but ultimately becomes cross-linked to membrane proteins by transglutaminase. During keratinocyte terminal differentiation glutamine residues of involucrin become covalently cross-linked to other envelope precursors via covalent  $\epsilon$ -( $\gamma$ -glutamyl) lysine bonds. Moreover, its large size allows involucrin to cross-link molecules that are separated by substantial distances in the cornified envelope. These properties allow a single involucrin molecule to form multiple cross-links, in multiple spatial planes, with other envelope precursors. Involucrin is specifically expressed in Chinese hamster ovarian cells (fibroblasts), PtK2 rat kangaroo kidney cells (simple epithelial) and rat epidermal keratinocytes (stratifying squamous epithelial).

**Synonyms:**

involucrin

**Product images:**

Western blot (WB) analysis of Involucrin antibody at 1/500 dilution Lane 1:MCF-7 whole cell lysate Lane 2:Mouse brain tissue lysate Lane 3:Rat brain tissue lysate



Immunohistochemistry (IHC) analyzes of Involucrin antibody in paraffin-embedded human breast carcinoma tissue.