

## Product datasheet for **AP06180PU-M**

### **IL3RB (CSF2RB) Rabbit Polyclonal Antibody**

#### **Product data:**

Product Type:	Primary Antibodies
Applications:	IHC, WB
Recommended Dilution:	<b>Western blot:</b> 1/500-1/1000. <b>Immunohistochemistry on Paraffin Sections:</b> 1/50-1/200.
Reactivity:	Human, Mouse, Rat
Host:	Rabbit
Clonality:	Polyclonal
Immunogen:	Synthetic peptide, corresponding to amino acids 550-600 of Human IL-3R $\beta$
Specificity:	This antibody detects endogenous levels of IL-3R protein. (region surrounding Phe587)
Formulation:	Phosphate buffered saline (PBS), pH~7.2 State: Aff - Purified State: Liquid purified Ig fraction (> 95% pure by SDS-PAGE) Preservative: 0.05% Sodium Azide
Concentration:	1.0 mg/ml
Purification:	Affinity Chromatography using epitope-specific immunogen
Conjugation:	Unconjugated
Storage:	Store undiluted at 2-8°C for one month or (in aliquots) at -20°C for longer. Avoid repeated freezing and thawing.
Stability:	Shelf life: one year from despatch.
Predicted Protein Size:	~44, 130 kDa
Gene Name:	colony stimulating factor 2 receptor beta common subunit
Database Link:	<u><a href="#">Entrez Gene 1439 Human P32927</a></u>



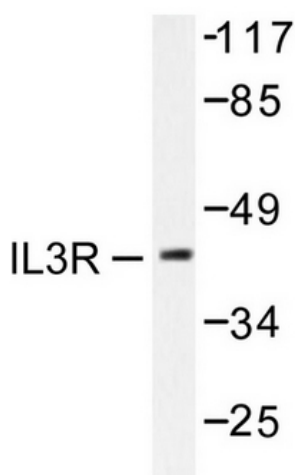
[View online »](#)

**Background:**

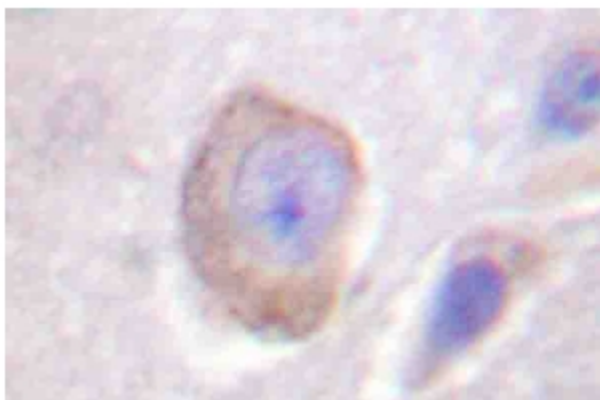
Interleukin 3 (IL3), originally called Colony Forming Unit-Stimulating Activity (CFU-SA) is a multifunctional cytokine produced by activated T lymphocytes or mast cells. IL3 supports the formation of multilineage colonies in the early development of multipotent hematopoietic progenitor cells. It induces colony formation of macrophages, neutrophils, mast cells, and megakaryocytes from agar suspended bone marrow cells. Interleukin 3 binds specifically and with high affinity to cell-surface receptors. Interleukin 3 receptors are members of the cytokine receptor superfamily. The IL3 receptor complex contains two distinct cytokine receptor subunits, ligand binding IL3 Ralpha and IL3 Rbeta. Recombinant human IL3 sRalpha (286 amino acid residue) has a predicted molecular mass of approximately 33 kDa. The alpha subunit alone binds IL3 with low affinity. The beta subunit does not bind IL3 by itself but is required for the high-affinity binding of IL3 to the heterodimeric receptor complex. The alpha subunit is also a component of the high-affinity receptor complex for IL5 and GMCSF.

**Synonyms:**

IL3RB, IL5RB, GM-CSF-RB

**Product images:**


Western blot analysis of IL-3R Antibody in extracts from RAW264.7 cells treated with G-CSF 25 ng/ml 15'.



Immunohistochemistry analysis of IL-3R Antibody in paraffin-embedded human brain tissue.