

Product datasheet for **AP06179PU-M**

IKK alpha (CHUK) Rabbit Polyclonal Antibody

Product data:

Product Type:	Primary Antibodies
Applications:	ELISA, IHC, WB
Recommended Dilution:	Western blot: 1/500-1/1000. Immunohistochemistry on Paraffin Sections: 1/50-1/200.
Reactivity:	Human, Mouse, Rat
Host:	Rabbit
Clonality:	Polyclonal
Immunogen:	Synthetic peptide, corresponding to amino acids 1-50 of Human IKK α .
Specificity:	This antibody detects endogenous levels of IKK- α protein. (region surrounding Met17)
Formulation:	Phosphate buffered saline (PBS), pH~7.2 State: Aff - Purified State: Liquid purified Ig fraction (> 95% pure by SDS-PAGE) Preservative: 0.05% Sodium Azide
Concentration:	1.0 mg/ml
Purification:	Affinity Chromatography using epitope-specific immunogen
Conjugation:	Unconjugated
Storage:	Store undiluted at 2-8°C for one month or (in aliquots) at -20°C for longer. Avoid repeated freezing and thawing.
Stability:	Shelf life: one year from despatch.
Predicted Protein Size:	~85 kDa
Gene Name:	conserved helix-loop-helix ubiquitous kinase
Database Link:	<u>Entrez Gene 1147 Human</u> <u>Q15111</u>

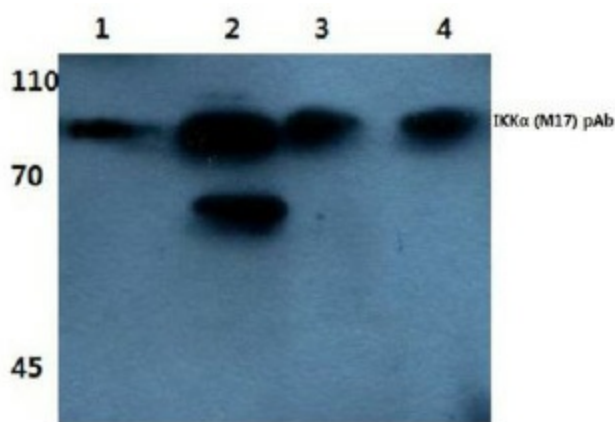
[View online »](#)

Background:

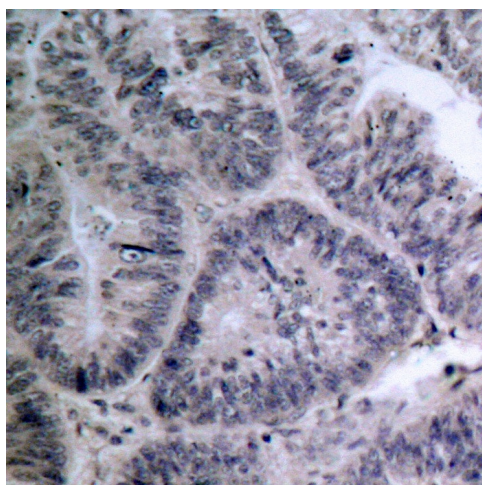
The NF- κ B/Rel transcription factors are present in the cytosol in an inactive state, complexed with the inhibitory I κ B proteins. Most agents that activate NF- κ B do so through a common pathway based on phosphorylation-induced, proteasome-mediated degradation of I κ B. The key regulatory step in this pathway involves activation of a high molecular weight I κ B kinase (IKK) complex whose catalysis is generally carried out by three tightly associated IKK subunits. IKK α and IKK β serve as the catalytic subunits of the kinase and IKK γ serves as the regulatory subunit. Activation of IKK depends upon phosphorylation at Ser177 and Ser181 in the activation loop of IKK β (Ser176 and Ser180 in IKK α), which causes conformational changes, resulting in kinase activation.

Synonyms:

CHUK, TCF16, I kappa-B kinase alpha, I κ BKA, IKK-alpha, IKK-A, I κ B kinase, I-kappa-B kinase 1, NFKB1A, IKK1

Product images:


Western blot analysis of IKK-a antibody at 1/500 dilution: Lane 1: HeLa whole cell lysate treated with TNF-alpha. Lane 2: RAW264.7 whole cell lysate treated with TNF-alpha. Lane 3: RAW264.7 whole cell lysate treated with LPS. Lane 4: PC12 whole cell lysate treated with LPS.



Immunohistochemistry (IHC) analyzes of IKK-a antibody in paraffin-embedded human colon carcinoma tissue.