

## Product datasheet for **AP06177PU-S**

### IGF1 Receptor (IGF1R) Rabbit Polyclonal Antibody

#### Product data:

Product Type:	Primary Antibodies
Applications:	IHC, WB
Recommended Dilution:	<b>Western blot:</b> 1/500-1/1000. <b>Immunohistochemistry on paraffin sections</b> 1/50-1/200.
Reactivity:	Human, Mouse, Rat
Host:	Rabbit
Clonality:	Polyclonal
Immunogen:	Synthetic peptide, corresponding to amino acids 1121-1170 of Human IGF-1R.
Specificity:	This antibody detects endogenous levels of IGF-1R protein. (region surrounding Ile1160)
Formulation:	Phosphate buffered saline (PBS), pH~7.2 State: Aff - Purified State: Liquid purified Ig fraction (> 95% pure by SDS-PAGE). Preservative: 15 mM Sodium Azide
Concentration:	1.0 mg/ml
Purification:	Affinity Chromatography using epitope-specific immunogen.
Conjugation:	Unconjugated
Storage:	Store undiluted at 2-8°C for one month or (in aliquots) at -20°C for longer. Avoid repeated freezing and thawing.
Stability:	Shelf life: one year from despatch.
Predicted Protein Size:	~ 95,155 kDa
Gene Name:	insulin like growth factor 1 receptor
Database Link:	<a href="#">Entrez Gene 3480 Human P08069</a>



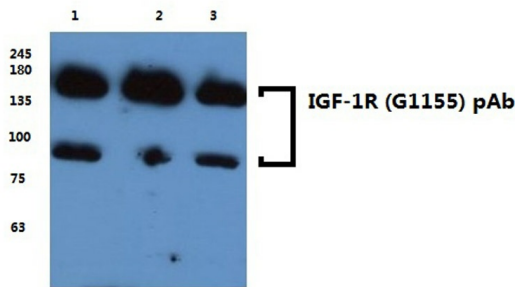
[View online »](#)

**Background:**

Insulin-like growth factor-I receptor (IGF-IR) is an RTK that stimulates growth in many different cell types, blocks apoptosis, acts as an intermediate of many growth hormone responses and may stimulate the growth of some types of cancer. The IGF-IR cognate ligand insulin-like growth factor-I (IGF-I) promotes association of IGF-IR with Shc, GRB2 and Sos 1, which initiates Ras and ERK kinase cascades, thereby modifying transcription factor activity, such as activation of the Elk transcription factors. The modular phosphotyrosine binding (PTB) domains of insulin receptor substrate (IRS)-1 and -2 can associate with active IGF-IR and initiate phosphatidylinositol 3-kinase-dependent downstream signals.

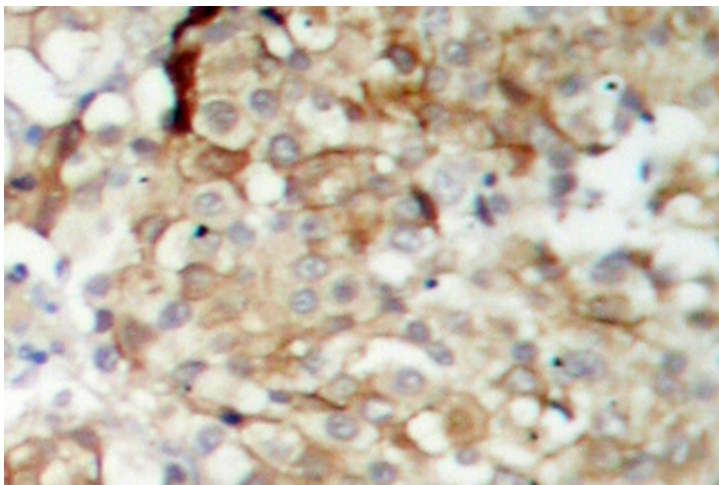
**Synonyms:**

IGF-I receptor, IGF1 Receptor

**Product images:**


Western blot (WB) analysis of IGF-1R antibody

**Lane1:MCF-7 whole cell lysate**  
**Lane2:HEK293T whole cell lysate**  
**Lane3:Hela whole cell lysate**  
**IGF-1R (G1155) pAb at 1:500 dilution**



Immunohistochemistry (IHC) analyzes of IGF-1R antibody in paraffin-embedded human breast carcinoma tissue.