

## Product datasheet for **AP06174PU-N**

### Hsp60 (HSPD1) Rabbit Polyclonal Antibody

#### Product data:

Product Type:	Primary Antibodies
Applications:	IF, IHC, WB
Recommended Dilution:	<b>Western blot:</b> 1/500-1/1000. <b>Immunohistochemistry on paraffin sections:</b> 1/50-1/200. <b>Immunofluorescence:</b> 1/50-1/200.
Reactivity:	Human, Mouse, Rat
Host:	Rabbit
Clonality:	Polyclonal
Immunogen:	Synthetic peptide, corresponding to amino acids 511-560 of Human HSP60.
Specificity:	This antibody detects endogenous levels of HSP60/HSPD1 protein. (region surrounding Thr547)
Formulation:	Phosphate buffered saline (PBS), pH 7.2. State: Aff - Purified State: Liquid purified Ig fraction Preservative: 0.05% sodium azide
Concentration:	1.0 mg/ml
Purification:	The antibody was affinity-purified from rabbit antiserum by affinity-chromatography using epitope-specific immunogen and the purity is > 95% (by SDS-PAGE)
Conjugation:	Unconjugated
Storage:	Store undiluted at 2-8°C for one month or (in aliquots) at -20°C for longer. Avoid repeated freezing and thawing.
Stability:	Shelf life: one year from despatch.
Predicted Protein Size:	~ 60 kDa
Gene Name:	heat shock protein family D (Hsp60) member 1
Database Link:	<a href="#">Entrez Gene 3329 Human P10809</a>



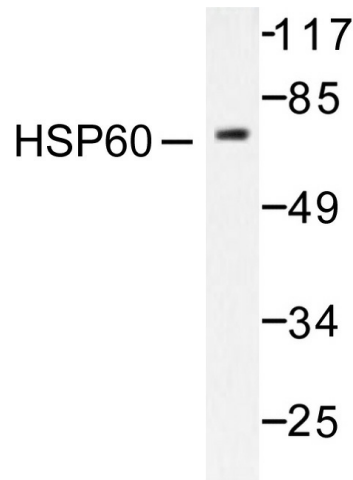
[View online »](#)

**Background:**

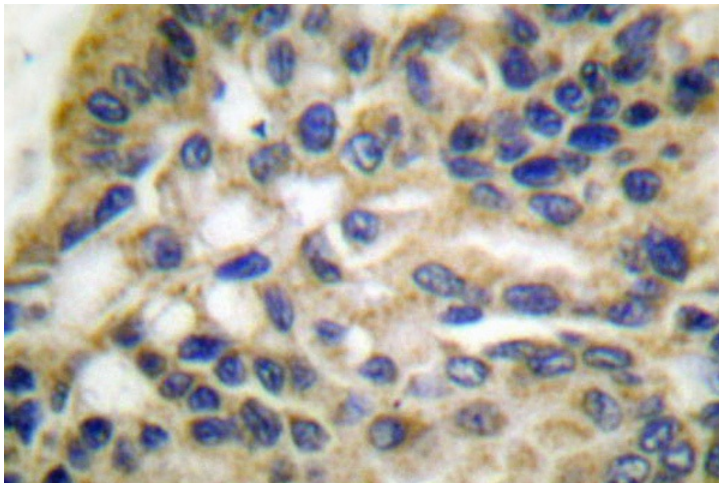
HSPs (also known as molecular chaperones) fall into six general families: HSP 90, HSP 70, HSP 60, the low molecular weight HSPs, the immunophilins, and the HSP 110 family. The constitutively expressed mitochondrial protein HSP 60 shares the ability to recognize and stabilize proteins during folding, assembly and disassembly with other HSP family members. The mitochondrial and cytosolic localization of HSP 60, combined with its binding and catalysis of folding of newly synthesized proteins destined for the mitochondrial matrix, classify this protein as a molecular chaperone. An additional role of HSP 60 is to act as a cell surface marker for  $\gamma/\delta$  T cell recognition.

**Synonyms:**

HSP-60, HSPD1, Heat shock protein 60, Chaperonin 60, HuCHA60, GROEL, GroEL Homolog, CPN60

**Product images:**

Western blot (WB) analysis of HSP60/HSPD1 antibody in extracts from COLO205 cells.



Immunohistochemistry (IHC) analysis of HSP60/HSPD1 antibody in paraffin-embedded human lung carcinoma tissue.