

Product datasheet for **AP06168PU-S**

NRG1 Rabbit Polyclonal Antibody

Product data:

Product Type:	Primary Antibodies
Applications:	ELISA, IF, IHC, WB
Recommended Dilution:	Western blot: 1/500-1/1000. Immunofluorescence: 1/50-1/200. Immunohistochemistry on Paraffin Sections: 1/50-1/200.
Reactivity:	Human, Mouse, Rat
Host:	Rabbit
Clonality:	Polyclonal
Immunogen:	Synthetic peptide, corresponding to the N-terminal of Human Neuregulin-1/SMDF.
Specificity:	This antibody detects endogenous levels of SMDF/Neuregulin-1 protein. (region surrounding Tyr4)
Formulation:	Phosphate buffered saline (PBS), pH~7.2 State: Aff - Purified State: Liquid purified Ig fraction (> 95% pure by SDS-PAGE) Preservative: 0.05% Sodium Azide
Concentration:	1.0 mg/ml
Purification:	Affinity Chromatography using epitope-specific immunogen
Conjugation:	Unconjugated
Storage:	Store undiluted at 2-8°C for one month or (in aliquots) at -20°C for longer. Avoid repeated freezing and thawing.
Stability:	Shelf life: one year from despatch.
Predicted Protein Size:	~44 kDa
Gene Name:	neuregulin 1
Database Link:	Entrez Gene 3084 Human Q02297



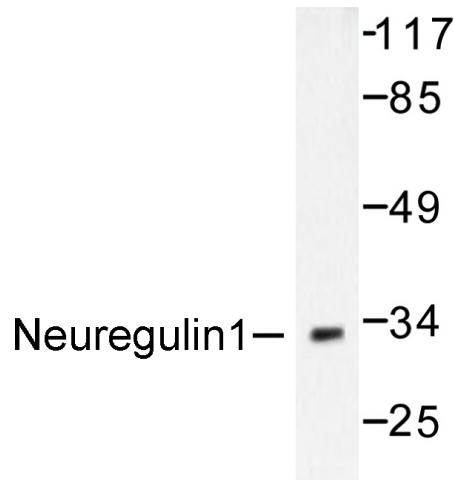
[View online »](#)

Background:

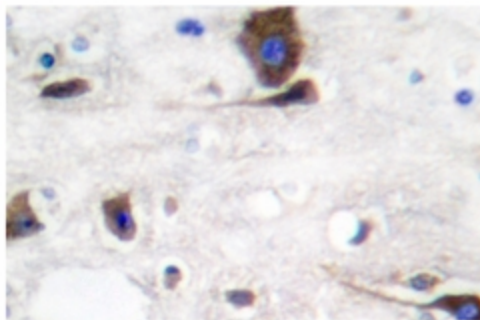
The neuregulins are a family of ErbB/HER ligands encoded by four genes. Neuregulin-1 gene, NRG1, encodes numerous splice variants with differing transcription initiation sites. Neuregulin-1 includes a range of isoforms with varying glycosylation, regulation of expression and function. Neuregulin-1 splice variants each bear an EGF-like domain, though otherwise have unique domain structures, differing functions and discrete tissue distribution. Six types of Neuregulin-1 isoform groups have been defined based on their structural features. Three types are most often described, type I (ARIA, NDF or HRG), type II (GGF) and type III (SMDF). Neuregulin-1 has been linked to schizophrenia and has diverse neural functions. Neuregulin-1 affects cell migration, the differentiation of neural crest and Schwann cells, and acts to upregulate the expression of acetylcholine receptors at muscle fibers during the formation of neuromuscular junctions.

Synonyms:

NRG1, GGF, HGL, HRGA, NDF, SMDF, Heregulin, HRG, Breast cancer cell differentiation factor p45, Glial growth factor, Neu differentiation factor

Product images:


Western blot (WB) analysis of SMDF/Neuregulin 1 antibody in extracts from SKOV3 cells.



Immunohistochemistry (IHC) analysis of Neuregulin-1/SMDF antibody in paraffin-embedded human brain tissue.