

Product datasheet for **AP06167PU-N**

Her2 (ERBB2) Rabbit Polyclonal Antibody

Product data:

Product Type:	Primary Antibodies
Applications:	ELISA, IHC, WB
Recommended Dilution:	Western blot: 1/500-1/1000. Immunohistochemistry on paraffin sections: 1/50-1/200.
Reactivity:	Human, Mouse, Rat
Host:	Rabbit
Clonality:	Polyclonal
Immunogen:	Synthetic peptide, corresponding to amino acids 841-890 of Human ErbB2/HER2.
Specificity:	This antibody detects endogenous levels of HER2 protein. (region surrounding Asp871)
Formulation:	Phosphate buffered saline (PBS), pH 7.2. State: Aff - Purified State: Liquid purified Ig fraction Preservative: 0.05% sodium azide
Concentration:	1.0 mg/ml
Purification:	Affinity-chromatography using epitope-specific immunogen and the purity is > 95% (by SDS-PAGE)
Conjugation:	Unconjugated
Storage:	Store undiluted at 2-8°C for one month or (in aliquots) at -20°C for longer. Avoid repeated freezing and thawing.
Stability:	Shelf life: one year from despatch.
Predicted Protein Size:	~ 138,185 kDa
Gene Name:	erb-b2 receptor tyrosine kinase 2
Database Link:	Entrez Gene 2064 Human P04626



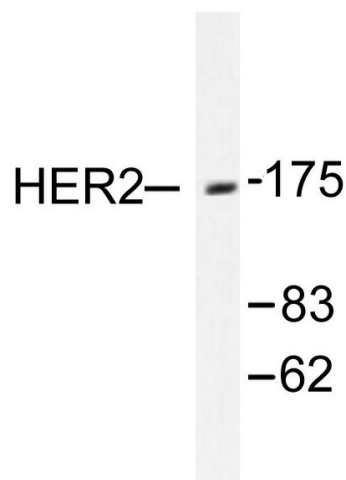
[View online »](#)

Background:

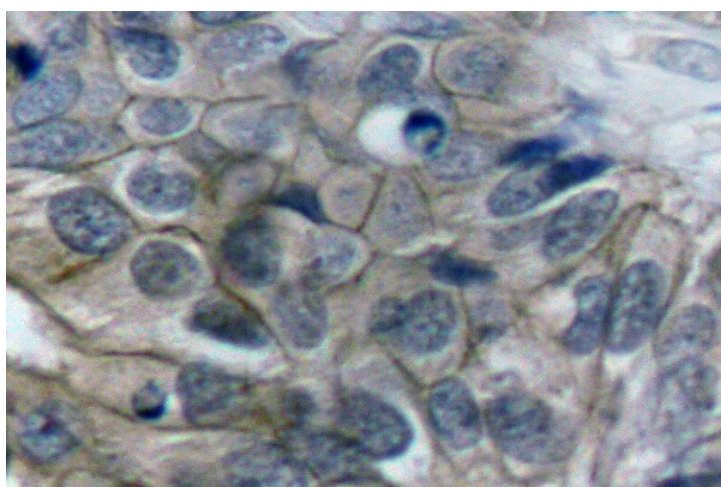
The EGF receptor family comprises several related receptor tyrosine kinases that are frequently overexpressed in a variety of carcinomas. Members of this receptor family include EGFR (HER1), Neu (ErbB-2, HER2), ErbB-3 (HER3) and ErbB-4 (HER4), which form either homodimers or heterodimers upon ligand binding. Neu, a glycoprotein, undergoes transactivation upon heterodimerization with other EGF receptor family members. Neu heterodimerization with ErbB-3 recruits heregulin, which induces phosphoinositide (PI) 3-kinase activation. Activation of Neu potentiates tumor cell motility and protease secretion and invasion, and also modulates cell cycle checkpoint function, DNA repair and apoptotic responses. Amplification and/or overexpression of Neu occurs in 20-30% of breast carcinomas. Measurement of increased Neu expression can be a predictor of disease prognosis. Neu may also prove to be a promising target for therapeutic agents.

Synonyms:

HER-2, NEU, p185erbB2, NGL, c-erbB-2, MNL19

Product images:

Western blot (WB) analysis of HER2 antibody in extracts from MDA-MB-231 cells.



Immunohistochemistry (IHC) analyzes of HER2 antibody in paraffin-embedded human breast carcinoma tissue.