

Product datasheet for **AP06166PU-M**

Her2 (ERBB2) Rabbit Polyclonal Antibody

Product data:

| | |
|-------------------------|--|
| Product Type: | Primary Antibodies |
| Applications: | ELISA, IHC, WB |
| Recommended Dilution: | Western blot: 1/500-1/1000. Immunohistochemistry on paraffin sections 1/50-1/200. |
| Reactivity: | Human, Mouse, Rat |
| Host: | Rabbit |
| Clonality: | Polyclonal |
| Immunogen: | Synthetic peptide, corresponding to amino acids 1211-1260 of Human ErbB2/HER2. |
| Specificity: | This antibody detects endogenous levels of HER2 protein. (region surrounding Thr1242) |
| Formulation: | Phosphate buffered saline (PBS), pH 7.2. State: Aff - Purified State: Liquid purified Ig fraction Preservative: 0.05% sodium azide |
| Concentration: | 1.0 mg/ml |
| Purification: | The antibody was affinity-purified from rabbit antiserum by affinity-chromatography using epitope-specific immunogen and the purity is > 95% (by SDS-PAGE) |
| Conjugation: | Unconjugated |
| Storage: | Store undiluted at 2-8°C for one month or (in aliquots) at -20°C for longer. Avoid repeated freezing and thawing. |
| Stability: | Shelf life: one year from despatch. |
| Predicted Protein Size: | ~ 138,185 kDa |
| Gene Name: | erb-b2 receptor tyrosine kinase 2 |
| Database Link: | Entrez Gene 2064 Human P04626 |



[View online »](#)

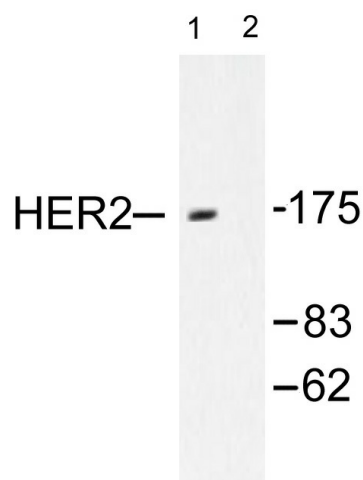
Background:

The EGF receptor family comprises several related receptor tyrosine kinases that are frequently overexpressed in a variety of carcinomas. Members of this receptor family include EGFR (HER1), Neu (ErbB-2, HER2), ErbB-3 (HER3) and ErbB-4 (HER4), which form either homodimers or heterodimers upon ligand binding. Neu, a glycoprotein, undergoes transactivation upon heterodimerization with other EGF receptor family members. Neu heterodimerization with ErbB-3 recruits heregulin, which induces phosphoinositide (PI) 3-kinase activation. Activation of Neu potentiates tumor cell motility and protease secretion and invasion, and also modulates cell cycle checkpoint function, DNA repair and apoptotic responses. Amplification and/or overexpression of Neu occurs in 20-30% of breast carcinomas. Measurement of increased Neu expression can be a predictor of disease prognosis. Neu may also prove to be a promising target for therapeutic agents.

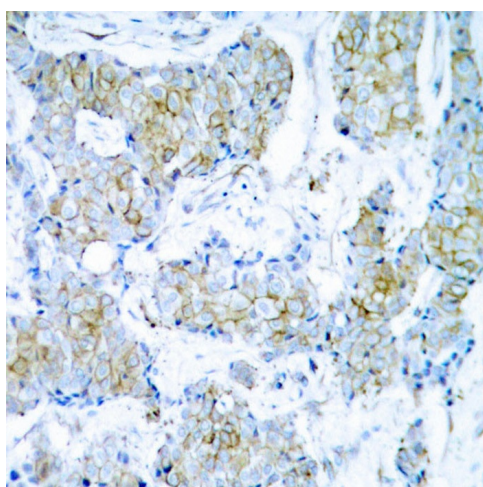
Synonyms:

HER-2, NEU, p185erbB2, NGL, c-erbB-2, MNL19

Product images:



Western blot (WB) analysis of HER2 antibody in extracts from SK-OV3 cells.



Immunohistochemistry (IHC) analyzes of HER2 antibody in paraffin-embedded human breast carcinoma tissue.