

Product datasheet for **AP06160PU-S**

HDAC6 Rabbit Polyclonal Antibody

Product data:

Product Type:	Primary Antibodies
Applications:	IF, IHC, WB
Recommended Dilution:	Western blot: 1/500-1/1000. Immunohistochemistry on paraffin sections 1/50-1/200. Immunofluorescence: 1/50-1/200.
Reactivity:	Human, Mouse, Rat
Host:	Rabbit
Clonality:	Polyclonal
Immunogen:	Synthetic peptide, corresponding to the C-terminal of Human HDAC6.
Specificity:	This antibody detects endogenous levels of HDAC6 protein. (region surrounding His1203)
Formulation:	Phosphate buffered saline (PBS), pH 7.2. State: Aff - Purified State: Liquid purified Ig fraction (> 95% (by SDS-PAGE). Preservative: 0.05% Sodium Azide
Concentration:	1.0 mg/ml
Purification:	Affinity Chromatography using epitope-specific immunogen.
Conjugation:	Unconjugated
Storage:	Store the antibody at 2-8°C for one month or (in aliquots) at -20°C for longer. Avoid repeated freezing and thawing.
Stability:	Shelf life: One year from despatch.
Predicted Protein Size:	~ 131, 160 kDa
Gene Name:	histone deacetylase 6
Database Link:	Entrez Gene 10013 Human Q9UBN7



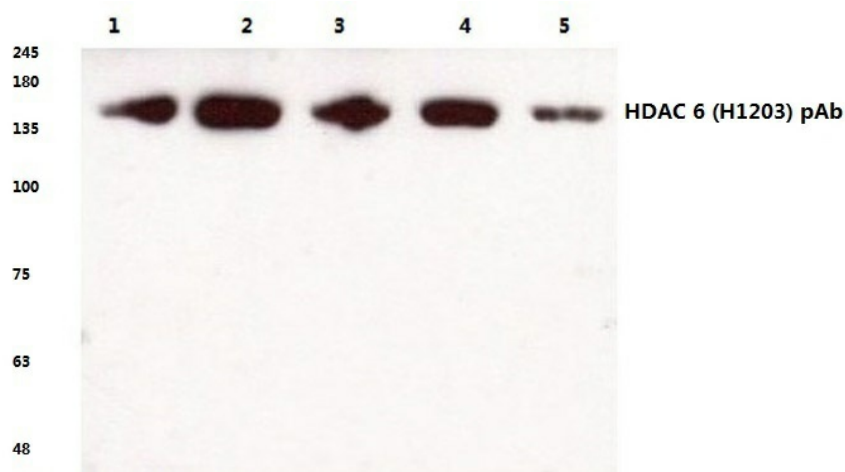
[View online »](#)

Background:

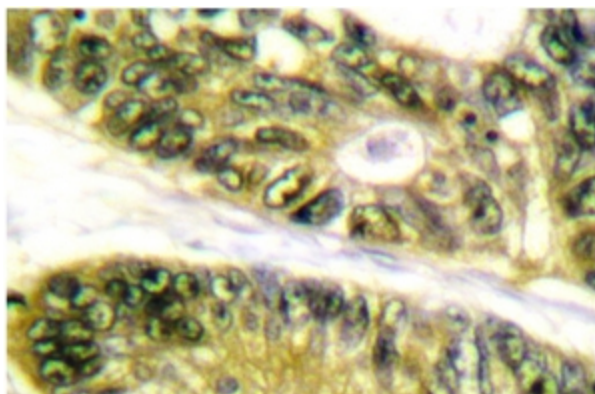
HDAC6 is a member of the class II mammalian histone deacetylases. Human HDAC6 is composed of 1215 amino acid residues. It possesses two separate putative catalytic domains. Both catalytic domains are fully functional HDACs and contribute independently to the overall activity of HDAC6 protein. A very potent NES is present at the amino-terminus of HDAC6, which was found to play an important role in regulating the shuttling of HDAC6 protein between cytoplasm and nucleus. The shuttling process may be a critical regulatory mechanism of HDAC6 function. The expression of HDAC6 is tightly linked to the state of cell differentiation. HDAC6 may participate in coordinating expression of a group of genes involved in the remodelling of chromatin during cell differentiation.

Synonyms:

Histone deacetylase 6, HD6, KIAA0901, JM21

Product images:

Western blot (WB) analysis of HDAC 6 antibody at 1/500 dilution. Lane 1: Jurkat whole cell lysate; Lane 2: HEK293T whole cell lysate treated with UV; Lane 3: MCF-7 whole cell lysate; Lane 4: Mouse brain tissue lysate; Lane 5: Rat brain tissue lysate.



Immunohistochemistry (IHC) analysis of HDAC6 antibody in paraffin-embedded human colon carcinoma tissue.