

## Product datasheet for **AP06154PU-N**

### **hCG beta (CGB3) Rabbit Polyclonal Antibody**

#### **Product data:**

Product Type:	Primary Antibodies
Applications:	IHC, WB
Recommended Dilution:	<b>Western blot:</b> 1/500-1/1000. <b>Immunohistochemistry on paraffin sections:</b> 1/50-1/200.
Reactivity:	Human, Mouse, Rat
Host:	Rabbit
Clonality:	Polyclonal
Immunogen:	Synthetic peptide surrounding Asp131 of Human CGB.
Specificity:	This antibody detects endogenous levels of hCG $\beta$ protein. (region surrounding Asp131)
Formulation:	Phosphate buffered saline (PBS), 50% glycerol, pH 7.2. State: Aff - Purified State: Liquid purified Ig fraction Preservative: 0.05% sodium azide
Concentration:	1.0 mg/ml
Purification:	Affinity-chromatography using epitope-specific immunogen and the purity is > 95% (by SDS-PAGE)
Conjugation:	Unconjugated
Storage:	Store undiluted at 2-8°C for one month or (in aliquots) at -20°C for longer. Avoid repeated freezing and thawing.
Stability:	Shelf life: one year from despatch.
Predicted Protein Size:	~ 18 kDa
Gene Name:	chorionic gonadotropin beta subunit 3
Database Link:	<a href="#">Entrez Gene 1082 Human</a> <a href="#">P0DN86</a>



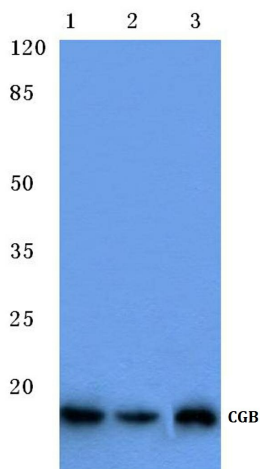
[View online »](#)

**Background:**

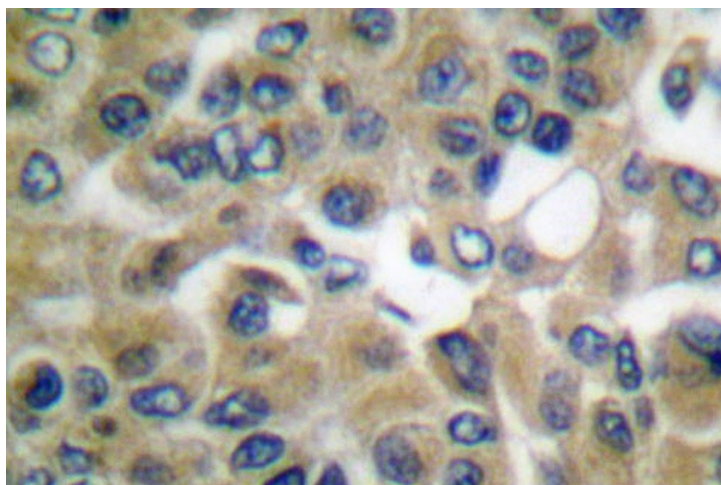
Choriogonadotropin is a hormone produced by the placenta in the first trimester of pregnancy and exists as a heterodimer formed from a unique  $\beta$  chain and an  $\alpha$  chain common to all gonadotropins. The unique  $\beta$  chain confers biological specificity to choriogonadotropin, luteinizing hormone and follicle stimulating hormone. The secreted  $\alpha$  subunit maps to human chromosome 6 and the  $\beta$  subunit of choriogonadotropin maps to human chromosome 19. Choriogonadotropin stimulates the ovaries to produce and maintain normal levels of the steroids essential for maintaining pregnancy, including estrogen and progesterone. Choriogonadotropin is a member of the cystine knot growth-factor superfamily, a group of proteins that contain a distinct arrangement of six cysteine residues and are expressed in placenta. The proper secretion and dimerization of choriogonadotropin depends on the conformation of the cystine knot, although biological activity is independent of this conformation.

**Synonyms:**

Choriogonadotropin subunit beta, CGB, CGB3, beta hCG, hCG-beta

**Product images:**

Western blot (WB) analysis of CGB antibody at 1/500 dilution Lane 1: MCF-7 cell lysate Lane 2: SP2/O cell lysate Lane 3: Rat kidney tissue lysate



Immunohistochemistry (IHC) analyzes of hCG  $\beta$  antibody in paraffin-embedded human breast carcinoma tissue.