

## Product datasheet for **AP06143PU-N**

### Metabotropic Glutamate Receptor 8 (GRM8) Rabbit Polyclonal Antibody

#### Product data:

Product Type:	Primary Antibodies
Applications:	IHC, WB
Recommended Dilution:	<b>Western blot:</b> 1/500 - 1/1000. <b>Immunohistochemistry on paraffin sections:</b> 1/50 - 1/200.
Reactivity:	Human, Mouse, Rat
Host:	Rabbit
Clonality:	Polyclonal
Immunogen:	Synthetic peptide, corresponding to amino acids 851-900 of Human mGluR-8.
Specificity:	This antibody detects endogenous levels of GluR8 protein. (region surrounding Gln871)
Formulation:	Phosphate buffered saline (PBS), pH 7.2. State: Aff - Purified State: Liquid purified Ig fraction Preservative: 0.05% sodium azide
Concentration:	1.0 mg/ml
Purification:	Affinity-chromatography using epitope-specific immunogen and the purity is > 95% (by SDS-PAGE).
Conjugation:	Unconjugated
Storage:	Store undiluted at 2-8°C for one month or (in aliquots) at -20°C for longer. Avoid repeated freezing and thawing.
Stability:	Shelf life: one year from despatch.
Predicted Protein Size:	~ 100 kDa
Gene Name:	glutamate metabotropic receptor 8
Database Link:	<a href="#">Entrez Gene 14823 Mouse</a> <a href="#">Entrez Gene 60590 Rat</a> <a href="#">Entrez Gene 2918 Human</a> <a href="#">O00222</a>



[View online »](#)

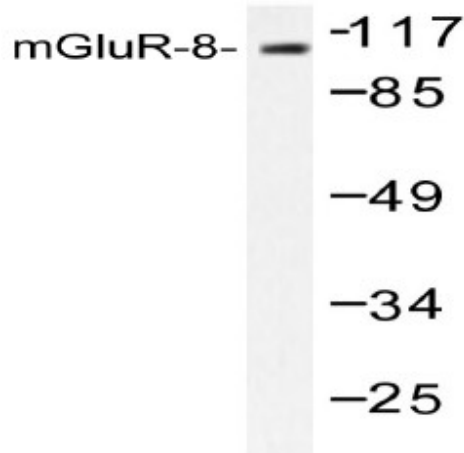
**Background:** GLuR-8 is a group III metabotropic glutamate receptor. In response to glutamate stimulation, GLuR-8 activates GTP-binding proteins that modulate second-messenger cascades. Alternative splicing of this integral membrane protein produces three isoforms: A, B, and C. Human GLuR-8 maps to q31.3-q32.1 of chromosome 7.

**Synonyms:** Metabotropic glutamate receptor 8, GPRC1H

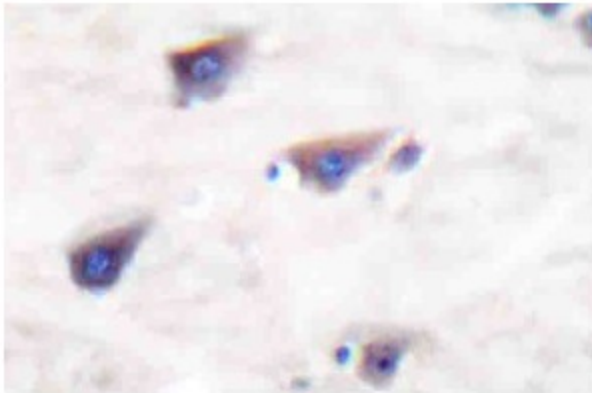
**Protein Families:** Druggable Genome, GPCR, Transmembrane

**Protein Pathways:** Neuroactive ligand-receptor interaction

**Product images:**



Western blot (WB) analysis of mGluR8 antibody in extracts from mouse brain cells.



Immunohistochemistry (IHC) analyzes of mGluR8 antibody in paraffin-embedded human brain tissue.