

## Product datasheet for **AP06142PU-N**

### Metabotropic Glutamate Receptor 7 (GRM7) Rabbit Polyclonal Antibody

#### Product data:

Product Type:	Primary Antibodies
Applications:	ELISA, IF, IHC, WB
Recommended Dilution:	<b>Western blot:</b> 1/500 - 1/1000. <b>Immunofluorescence:</b> 1/50 - 1/200. <b>Immunohistochemistry on paraffin sections:</b> 1/50 - 1/200.
Reactivity:	Human, Mouse, Rat
Host:	Rabbit
Clonality:	Polyclonal
Immunogen:	Synthetic peptide, corresponding to amino acids 860-918 of Human mGluR-7.
Specificity:	This antibody detects endogenous levels of mGluR7 protein. (region surrounding Glu894)
Formulation:	PBS, pH~7.2 State: Aff - Purified State: Liquid purified Ig fraction (> 95% pure by SDS-PAGE) Preservative: 0.05% Sodium Azide
Concentration:	1.0 mg/ml
Purification:	Affinity Chromatography using epitope-specific immunogen
Conjugation:	Unconjugated
Storage:	Store undiluted at 2-8°C for one month or (in aliquots) at -20°C for longer. Avoid repeated freezing and thawing.
Stability:	Shelf life: one year from despatch.
Predicted Protein Size:	~ 100 kDa
Gene Name:	glutamate metabotropic receptor 7
Database Link:	<a href="#">Entrez Gene 81672 Rat</a> <a href="#">Entrez Gene 108073 Mouse</a> <a href="#">Entrez Gene 2917 Human Q14831</a>



[View online »](#)

**Background:**

The mGluR proteins (metabotropic glutamate receptors) are members of the G protein-coupled receptor family and are functionally and pharmacologically distinct from the GluR proteins (ionotropic glutamate receptors). The eight currently known mGluR proteins are mediated by two G proteins with opposing regulation of adenylate cyclase pathways. The activities of mGluR-1 and mGluR-5 are mediated by a G protein that activates a phosphatidylinositolcalcium second messenger system and generates a calcium-activated chloride current. The remainder of the eight subtypes of mGluR have an activity mediated by a G protein that inhibits adenylate cyclase activity. mGluR-7, which can interact with PRKCABP, acts as a receptor for glutamate. It is highly expressed in various areas of the brain, but highest levels are detected in cerebellum, cerebral cortex and hippocampus.

**Synonyms:**

Metabotropic glutamate receptor 7, GPRC1G, MGLUR7

**Protein Families:**

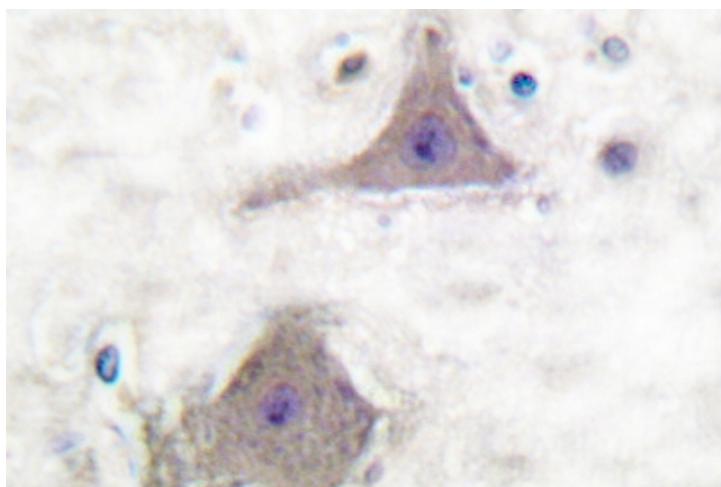
Druggable Genome, GPCR, Transmembrane

**Protein Pathways:**

Neuroactive ligand-receptor interaction

**Product images:**

Western blot (WB) analysis of mGluR7 antibody in extracts from HuvEc cells.



Immunohistochemistry (IHC) analyzes of mGluR7 antibody in Paraffin-Embedded Human brain tissue.