

Product datasheet for **AP06141PU-N**

GRIK2 (841-890) Rabbit Polyclonal Antibody

Product data:

Product Type:	Primary Antibodies
Applications:	IHC, WB
Recommended Dilution:	Western blot: 1/500-1/1000. Immunohistochemistry on paraffin sections: 1/50-1/200.
Reactivity:	Human
Host:	Rabbit
Clonality:	Polyclonal
Immunogen:	Synthetic peptide corresponding to amino acids 841-890 of Human mGluR-6.
Specificity:	This antibody detects endogenous levels of GluR6 protein. (region surrounding Ala865)
Formulation:	PBS with 0.02% sodium azide, 50% glycerol, pH7.2 State: Aff - Purified State: Liquid purified Ig fraction (> 95% pure by SDS-PAGE)
Concentration:	1.0 mg/ml
Purification:	Affinity-chromatography using epitope-specific immunogen
Conjugation:	Unconjugated
Storage:	Store undiluted at 2-8°C for one month or (in aliquots) at -20°C for longer. Avoid repeated freezing and thawing.
Stability:	Shelf life: one year from despatch.
Predicted Protein Size:	~ 100 kDa
Gene Name:	glutamate ionotropic receptor kainate type subunit 2
Database Link:	<u>Entrez Gene 2898 Human</u> <u>Q13002</u>



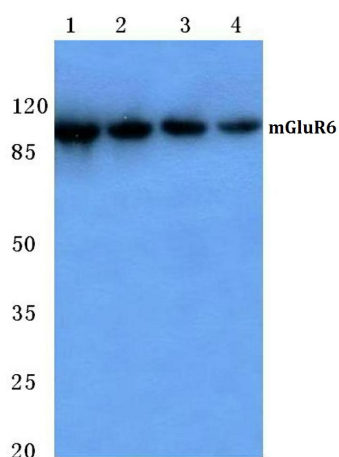
[View online »](#)

Background:

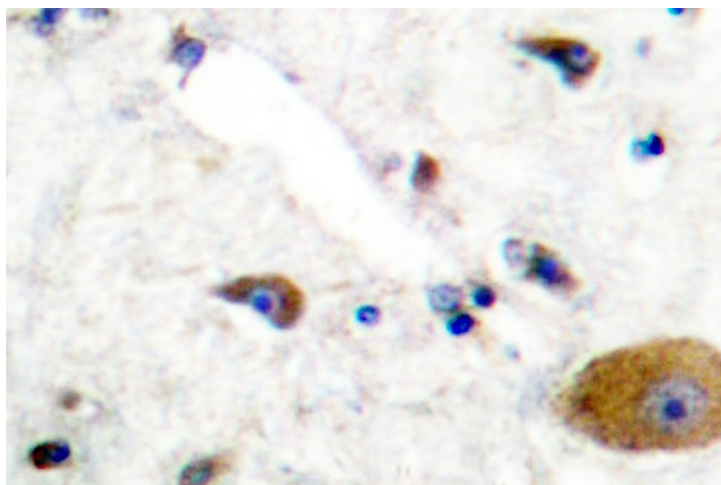
The mGluR proteins (metabotropic glutamate receptors) are members of the G protein-coupled receptor family and are functionally and pharmacologically distinct from the GluR proteins (ionotropic glutamate receptors). The eight currently known mGluR proteins are mediated by two G proteins with opposing regulation of adenylate cyclase pathways. The activities of mGluR-1 and mGluR-5 are mediated by a G protein that activates a phosphatidylinositolcalcium second messenger system and generates a calcium-activated chloride current. The remainder of the eight subtypes of mGluR have an activity mediated by a G protein that inhibits adenylate cyclase activity. mGluR-6 is expressed in the synapses of bipolar cell dendrites. This receptor is involved in mediating synaptic transmission from rod and cone photoreceptors to other neurons.

Synonyms:

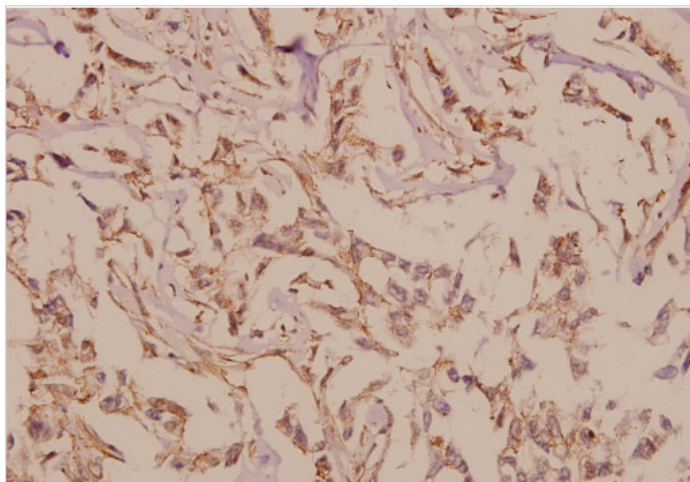
GRIK2, Excitatory amino acid receptor 4, EAA4

Product images:


Western blot (WB) analysis of mGluR-6 antibody at 1/500 dilution: Lane 1: HeLa whole cell lysate Lane 2: NIH-3T3 whole cell lysate Lane 3: Raw264.7 whole cell lysate Lane 4: H9C2 whole cell lysate



Immunohistochemistry (IHC) analysis of GluR6 antibody in paraffin-embedded human breast carcinoma tissue at 1/50 dilution.



Immunohistochemistry (IHC) analysis of GluR6 antibody in paraffin-embedded human brain tissue.