

Product datasheet for **AP06136PU-N**

GDNF Receptor alpha 1 (GFRA1) Rabbit Polyclonal Antibody

Product data:

Product Type:	Primary Antibodies
Applications:	IHC, WB
Recommended Dilution:	Western blot: 1/500-1/1000. Immunohistochemistry on Paraffin Sections: 1/50-1/200.
Reactivity:	Human, Mouse, Rat
Host:	Rabbit
Clonality:	Polyclonal
Immunogen:	Synthetic peptide, corresponding to amino acids 50-100 of Human GFR α -1.
Specificity:	This antibody detects endogenous levels of GFR alpha-1 protein. (region surrounding Lys90)
Formulation:	Phosphate buffered saline (PBS), pH~7.2 State: Aff - Purified State: Liquid purified Ig fraction (> 95% pure by SDS-PAGE) Preservative: 0.05% Sodium Azide
Concentration:	1.0 mg/ml
Purification:	Affinity Chromatography using epitope-specific immunogen
Conjugation:	Unconjugated
Storage:	Store undiluted at 2-8°C for one month or (in aliquots) at -20°C for longer. Avoid repeated freezing and thawing.
Stability:	Shelf life: one year from despatch.
Predicted Protein Size:	~ 51 kDa
Gene Name:	GDNF family receptor alpha 1
Database Link:	<u>Entrez Gene 14585 Mouse</u> <u>Entrez Gene 25454 Rat</u> <u>Entrez Gene 2674 Human</u> <u>P56159</u>



[View online »](#)

Background:

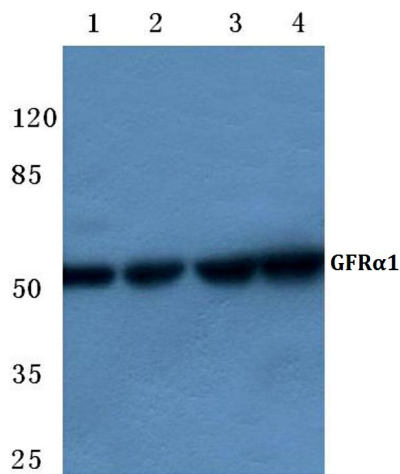
Glial cell line-derived neurotrophic factor (GDNF) and the related neurotrophic factor neurturin (NTN) are potent survival factors for central and peripheral neurons. GDNF is a glycosylated, disulfide-bonded homodimer that is distantly related to the TGF β superfamily of growth factors. Three receptors for these factors, GFR α -1 (also designated GDNFR- α , RETL1 or TrnR-1), GFR α -2 (also designated GDNFR- β , RETL2, NTN α or TrnR-2) and GFR α -3 have been identified. The receptors do not contain transmembrane domains and are attached to the cell membrane by glycosyl-phosphoinositol linkage. Both GFR α -1 and GFR α -2 have been shown to mediate the GDNF-dependent and NTN-dependent phosphorylation and activation of the tyrosine kinase Ret. GFR α -3 is expressed only during development.

Synonyms:

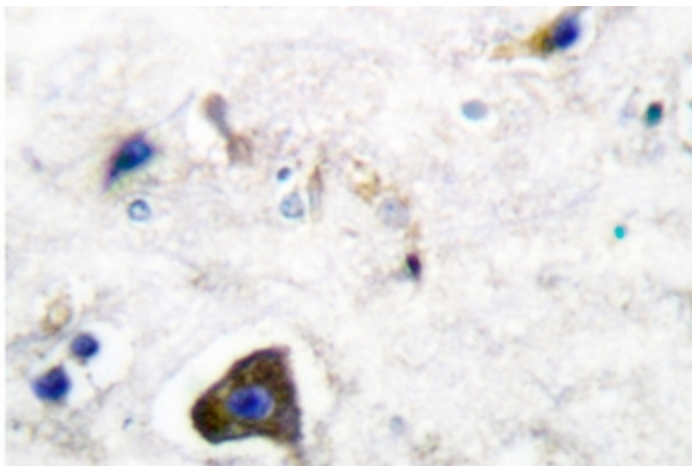
GFR-alpha-1, GDNF receptor alpha, RET ligand 1, GDNFRA, RETL1, TRNR1

Protein Families:

Druggable Genome

Product images:


Western blot (WB) analysis of GFRA-1 antibody at 1/500 dilution Lane 1:HEK293T whole cell lysate Lane 2:Mouse liver tissue lysate Lane 3:PC12 whole cell lysate Lane 4:H9C2 whole cell lysate



Immunohistochemistry analysis of GFRA1 / GDNFR-alpha Antibody in paraffin-embedded human brain tissue.