

## Product datasheet for **AP06134PU-N**

### Gastrin (GAST) Rabbit Polyclonal Antibody

#### Product data:

Product Type:	Primary Antibodies
Applications:	IF, IHC, WB
Recommended Dilution:	<b>Western blot:</b> 1/500-1/1000. <b>Immunohistochemistry on paraffin sections:</b> 1/50-1/200. <b>Immunofluorescence:</b> 1/50-1/200.
Reactivity:	Human, Mouse, Rat
Host:	Rabbit
Clonality:	Polyclonal
Immunogen:	Synthetic peptide, corresponding to amino acids 61-110 of Human Gastrin.
Specificity:	This antibody detects endogenous levels of Gastrin protein. (region surrounding Met90)
Formulation:	Phosphate buffered saline (PBS), pH 7.2. State: Aff - Purified State: Liquid purified Ig fraction (> 95% pure by SDS-PAGE) Preservative: 0.05% sodium azide
Concentration:	1.0 mg/ml
Purification:	The antibody was affinity-purified from rabbit antiserum by affinity-chromatography using epitope-specific immunogen and the purity is > 95% (by SDS-PAGE)
Conjugation:	Unconjugated
Storage:	Store undiluted at 2-8°C for one month or (in aliquots) at -20°C for longer. Avoid repeated freezing and thawing.
Stability:	Shelf life: one year from despatch.
Predicted Protein Size:	~ 12 kDa
Gene Name:	gastrin
Database Link:	<a href="#">Entrez Gene 2520 Human P01350</a>



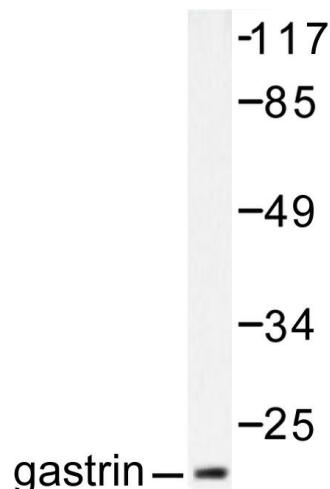
[View online »](#)

**Background:**

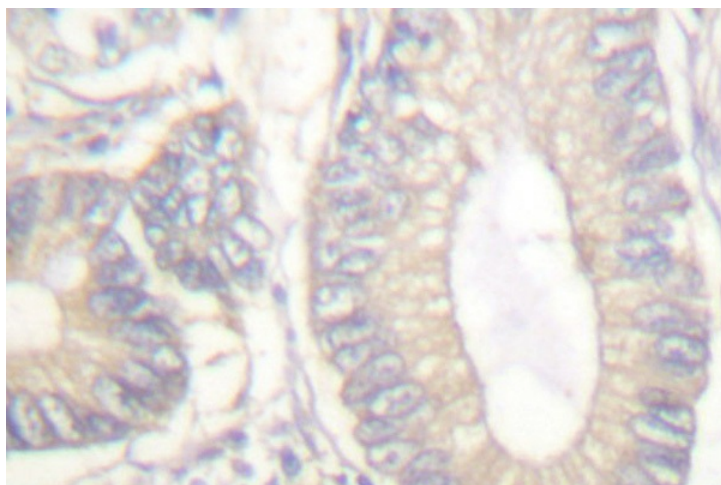
Gastrin, which is normally formed by mucosal cells in the gastric antrum and by the D cells of the pancreatic islets, is a hormone whose main function is to stimulate secretion of HCl by the gastric mucosa. HCl, in turn, inhibits gastrin formation. Gastrin also stimulates smooth muscle contraction and increases blood circulation and water secretion in the stomach and intestine. Gastrin is regulated by epidermal growth factor in both mice and humans. Gastrin is excreted in excess by pancreatic tumors in the Zollinger- Ellison syndrome. Gastrin maps to human chromosome 17q-21. Gastrin- Releasing Peptide (GRP) stimulates the release of gastrin as well as other gastrointestinal hormones, in addition to acting as an autocrine growth factor for certain cell types. High levels of GRP are found in the human lung just after birth and levels decrease thereafter in parallel with the observed disease in a number of pulmonary neuroendocrine cells. GRP is known to promote lung tumorigenesis in model systems and, interestingly, is induced by retinoic acid. GRP is involved in several functions with the hypothalamus, and is thought to play a role in regulating pituitary hormone secretion. GRP maps to human chromosome 18q21.

**Synonyms:**

GAST, GAS

**Product images:**


Western blot (WB) analysis of Gastrin antibody in extracts from NIH/3T3 cells.



Immunohistochemistry (IHC) analyzes of Gastrin antibody in paraffin-embedded human colon carcinoma tissue.